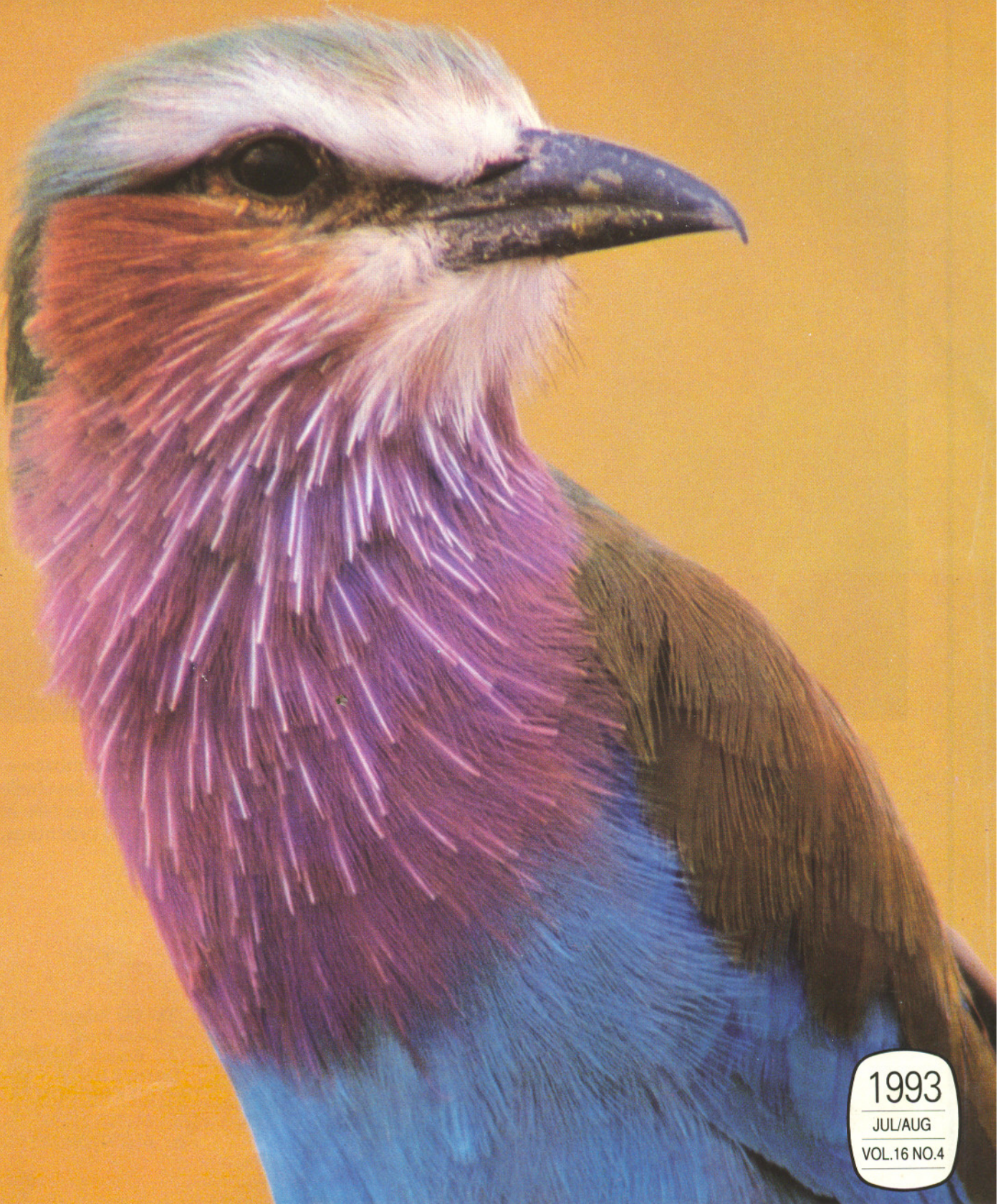


Swara

East AFRICAN WILDLIFE Society



1993

JUL/AUG

VOL.16 NO.4

Inside:

Focus on Uganda, Migrations...

“The best spots in Africa”



The most comprehensive selection of luxury photographic safaris in Kenya, Tanzania, Zimbabwe, Botswana, Namibia and South Africa. Scuba diving in the crystal blue waters of the Seychelle islands. Gorilla trekking in the rainforests of Rwanda and Zaire. Luxury cruises down the Nile in Egypt. All of “The best spots in Africa” are described in four colour detail in our 1993 brochures. Contact your travel agent or Wildlife Safari for your free copy.

Wildlife Safari

International House
P.O. Box 56803
Nairobi
KENYA

Tel: 254 (2) 340 319
Fax: 254 (2) 338 972

City Arcade Office Tower
207 Murray Street
Perth, W.A. 6000
AUSTRALIA

Tel: 61 (9) 322 5372
AUS: (008) 998 558
Fax: 61 (9) 321 2770

346 Rheem Boulevard
Moraga, CA 94556
U.S.A.

Tel: 1 (510) 376 5595
USA: 1 (800) 221 8118
Fax: 1 (510) 376 5059

The Old Bakery
South Road
Reigate

Surrey, RH27LB
UNITED KINGDOM

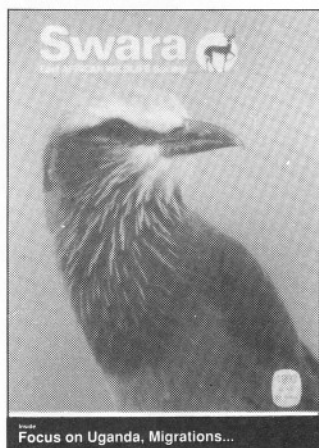
Tel: 44 (737) 223 903
Fax: 44 (737) 241 102

 **QANTAS**

swissair 

BRITISH AIRWAYS 





Focus on Uganda, Migrations...

Cover photo: Lilac breasted roller
RICK EDWARDS

3 Society services

4 Letters

7 Comment

by Dr Kajubiri-Froelich

8 Migration:
JOURNEY OF LIFE

by Barbara Sleeper
Amazing feats when great and small
creatures take to the road.

13 Sustainable forestry:
THE CASE OF THE BUDONGO
FOREST, UGANDA.

by Vernon Reynolds
Why has Budongo forest survived
when so many have not?

18 Uganda: Alive and well

by Richard Vigne
It is time you made a trip now.

21 To hunt or not to hunt

by Imre Loeffler
The full article from which a previous
'Call of the wild' essay was condensed.

23 Society Highlights

25 Book Reviews

26 Down the Albert Nile

by Jake Reynolds
Retracing a route of history and
adventure

36 Call of the wild

by Leslie S. Adler
Myth of the modern hunter



THE EAST AFRICAN
WILDLIFE SOCIETY

The Impala antelope is the symbol
of the East African Wild Life Society.
Swara (sometimes pronounced Swala)
is the swahili word for antelope

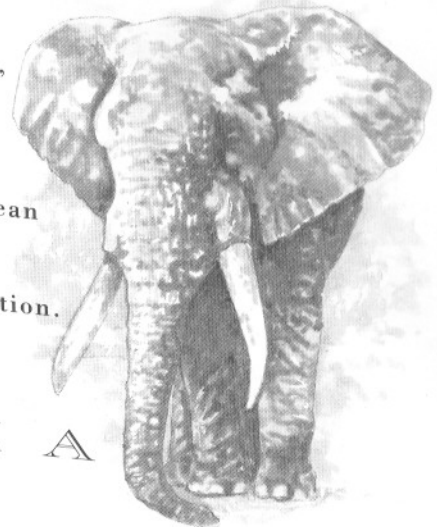
Editor: Justina E. Muchura **Advertising/Editorial Assistant:** Jane N. Kariuki **Typesetting:** Typotronic Typesetters Ltd
Design: Designplus **Printing:** Majestic Printing Works Ltd **Colour Separations:** Donated by Webb and Sons Inc, Dallas, Texas
Advertising Sales: Advertising Department, Swara Magazine, P.O. Box 20110, Nairobi, Kenya. Tel: 748170/1/2/3 Fax: 746868
Swara Offices: 2nd Floor, Museum Hill Centre, Museum Hill Road, Nairobi. **Swara Magazine,** P.O. Box 20110, Nairobi, Kenya.
Tel: 748170/1/2/3 Fax: 254-2-746868

Swara is a bi-monthly magazine owned and published six times a year by the East African Wild Life Society. The Society is a non-profit making organisation formed in 1961 by amalgamating the Wild Life Societies of Kenya and Tanzania (both founded in 1956). It is Society policy to conserve wildlife and its habitat, in all its forms, as national and international resource. Copyright © 1993 East African Wild Life Society. No reproduction whatsoever is permitted without the written permission of the Editor. Opinions expressed by contributors are not necessarily the official view of the Society.

GREAT SAFARIS OF THE WORLD

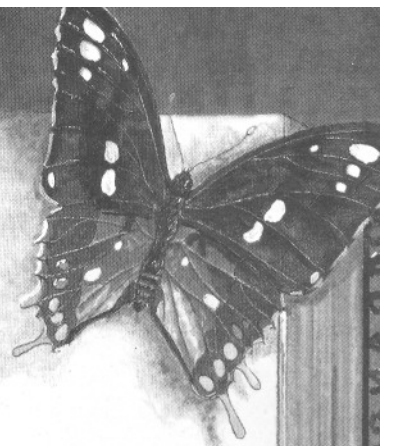
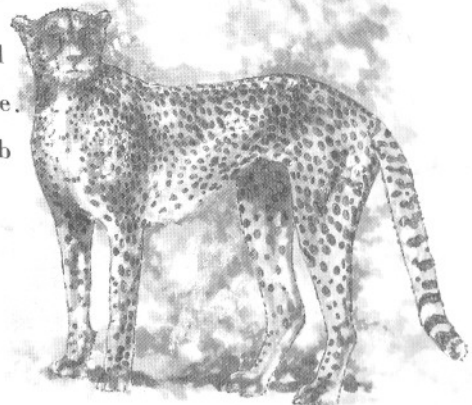
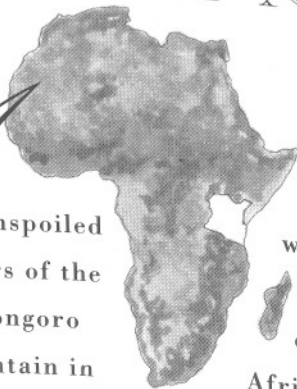
K E N Y A

*S*afari country, friendly people, fascinating culture. An ornithological paradise. Wide rivers, clear lakes, high mountains, colourful flora. Historical train, balloon safaris. The great Rift Valley. Superb golden Indian Ocean beaches. Magnificent coral reefs, breath taking marine life. Kenya - the perfect holiday destination.



T A N Z A N I A

*A*n unspoiled wildlife paradise, natural wonders of the world. Ngorongoro mountain in Olduvai Gorge, largest and most remote game reserve, the Selous. Uncrowded parks, friendly, peaceful people. Fantastic bird watching, superb lodges, gleaming unspoiled beaches. Tanzania - the most exciting safari destination.



UNITED TOURING COMPANY LTD.

Fedha Towers, Muindi Mbingu / Kaunda St.

P.O. Box 42196 NAIROBI • Tel: (254 2) 331960 Telex: 22228 UTC.

Fax: Head Office (254 2) 331422 Touring (254 2) 216871, Safaritrail (254 2) 216181.

Subzali Building / Goliandoi Road.

P.O. Box 2211 ARUSHA • Tel: (255 57) 8844 Telex: 42110 • Fax: (255 57) 8222.



**EAST AFRICAN WILDLIFE SOCIETY
CORPORATE MEMBERS**

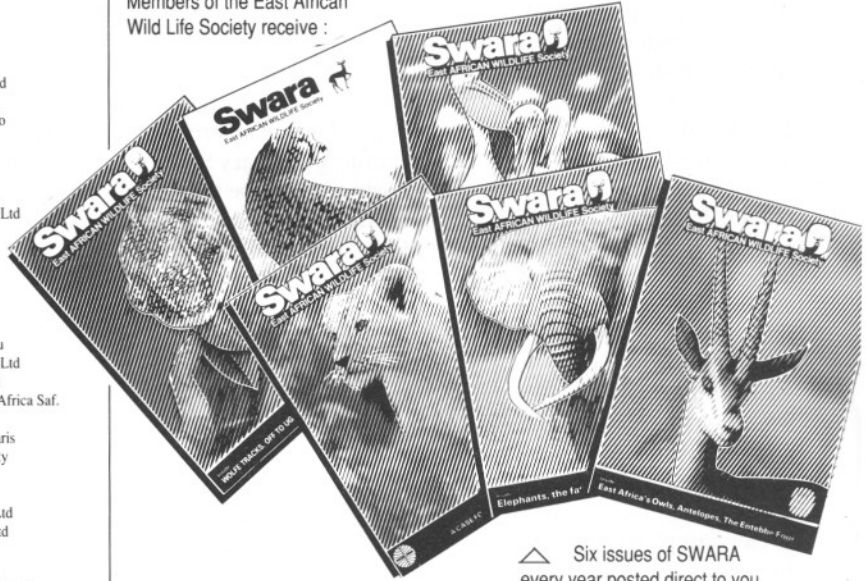
- | | | |
|---|---|---|
| <p>ABN Amro Bank
Abercrombie & Kent Ltd
Acacia Travel Inc.
Acacia Expeditions
Across Africa Safaris Ltd
Africa Safari Club
African Fund for Endangered Wildlife (K) Ltd
Air Kenya Aviation Ltd
Apollo Insurance Co. Ltd
African Safari Trails Ltd
African Tours and Hotels
African Wildlife Foundation
African Wildlife Safari P/Ltd - (Australia)
Agricultural Finance Corporation
Alfahd Ghatet Tahsheen
Archers Tours & Travel Ltd
Atlas Copco (K) Ltd
Avon Rubber Co (K) Ltd
Bamburi Portland Cement
Barclays Bank (K) Ltd
Baring J.
Bartkus J.
B.A.T. Kenya Ltd
Big Five Tours & Safaris
Big Five Tours & Expeditions Ltd
Biol. José Luis Arrendondo C.
Bishop A.J.
Bivouac Safaris Ltd
Block Hotels Ltd
Blue Marlin & Lawford's Hotels
Bookings Ltd
Brooke Bond (K) Ltd
Bruce Travel
Brunory Nan
Business Machines (K) Ltd
Caltex Oil (K) Ltd
Cannon Assurance (K) Ltd
Carbacid (CO.) Ltd
Chandaria Industries
Charlet. A.
Catering Levy Trustees
Chickadee Hill Farm Inc.
Chicago Zoological Society - (USA)
Chiuni Mr. & Mrs. P.
Chui E.A. Wildlife Conservation Shop
City Printing Ltd
Coca-Cola Africa Ltd
Cogefarimpresit (T)
Columbus Zoo Park Association
Commercial Bank of Africa Ltd
C.M.C. Holdings
Condor Air Services
Crokey Stokes Kennedy
Crown Paints & Building Products Ltd
D & G Consultants
De Filippi, Carlo
Delamere Camps
Designplus Ltd
De Wilde Laurent
Diamond Trust of Kenya Ltd
Dipti (K) Ltd
Dowse R.K.
East African Industries Ltd
E.A. Ornithological Safaris Ltd
East African Portland Cement
East African Storage Co. Ltd
East African Wildlife Safaris Ltd
EBAA Iron Inc.
Elzenga J.W.
Ethiopian Wildlife Conservation Organisation
Express General Insurance Services
Express Kenya Ltd
Express Mombasa
Farmers Choice Ltd</p> | <p>Firestone (E.A.) 1969 Ltd
Flamingo Tours
Food & Agricultural Organisation
Foundation De Bellerive (Switzerland)
Four Seasons Travel
Friends of Conservation
Feibighaus E.F.
Fritidsbus Temaressor
Gajjar M.M.
Galaxies Travels Agencies
Gametrackers (K) Ltd
General Motors (K) Ltd
Geri Eikaas
Glaxo East Africa Ltd
Global Safaris
Groth Wolfgang
Guerba (K) Ltd
Guinn M.C.
Gunter Bolte
Hartsfield J.W.
Henniges A.
Heritage Insurance Co. Ltd
Higgins, Mr & Mrs.
Hillcrest Secondary School
Hilton International
Hoechst East Africa Ltd
Honor, Mrs. J.W.
Hovmand Anne Bolette
Interact Ltd
International Distillers (K) Ltd
International Ventures Ltd
Intra Safaris
Ivory Safaris Tours (1975) Ltd
Isler Mr H.H.
Italian Cultural Institute
Jambo Safari Club
Jansegers A J F
Japan Int. Co-operation Agency
Jet Travel Ltd
John Ronah and Sons
Jubilee Insurance Company Ltd
Kapi Ltd
Kenkels Kurt
Kenya Airways
Kenya Beach Hotel
Kenya Belgium Project
Kenya Breweries Ltd
Kenya Reinsurance Corporation
Kenya Wildlife Service
Khetia S.A.
Kilimanjaro Safari Club
Kimbla (K) Ltd
Kobil Petroleum Ltd
Kodak (Kenya) Ltd
Kumuka Expeditions
Kuoni Travel Ltd
Leisure Lodges Ltd
Let's Go Travel
Library Museum of Comparative Zoology
Linner Dr. J.L.M.
Lion of Kenya Insurance Co. Ltd
Lloyd Masika Ltd
Longman (K) Ltd
Lonrho Hotels (K) Ltd
Makki International Group
Masai Mara Sopa Lodge Ltd
Minet ICDC Ins. Brokers Ltd
Mombasa Academy
Monsanto Central African Inc.
Motor Mart Group Ltd
Moylan Mulcahy and Co.
Mweka Wildlife College
Nairobi Safari Club
National Industry Credit
National By-Products
National Outdoor Leadership School
NCR Kenya Ltd
Nolan-Neylan K.
Oserian Development Co. Ltd
Panafrikan Paper Mills</p> | <p>Papyrus Tours
Patel Dr A.R.
Peter & Makki Travel (K) Ltd
Peregine Travel
Phoenix of East Africa
Assurance Co. Ltd
Photomap (K) Ltd
Piglia Vanzetti M.
Pouw J.G.
Prestige Hotel Ltd
Prestige Safaris Ltd
Price's Tax Service
Private Safaris (EA) Ltd
Private Safaris Zurich
Provincial Insurance Co of EA Ltd
Pyles Lumber Co Inc.
Reckitt & Colman
Rhea Dr. M.J.
Rhone-Poulenc Kenya Ltd
Rotel Tours
Rosenberg R.P.
Ruia R.R.
Rudolf Bacher
Safari Beach Hotel
Sadolin Paints Ltd
Safari and Cordon Bleu
Safaris Unlimited (A) Ltd
Safariworld Kenya Ltd
Sarova Hotels/Across Africa Saf.
Saunders Mr R. B.
Savuka Tours and Safaris
St. Lawrence University
Sarit Centre
Schulz J.
Scientific Consultant Ltd
Scorpio Enterprises Ltd
Securicor Kenya Ltd
Seiple Lithograph Co.
Serengeti Safari Lodges Ltd
Severin Sea Lodge
S.G.S. (K) Ltd
Shelly Beach Hotel
Shell Exploration & Production
Solio Ranch Ltd
Sublime Construction Services Ltd
Symbion International
Tamarind Management
Tanapa Community Conservation Services
Terjensen B.
Text Book Centre Ltd
Textprint Ltd
The Ark
Towel Industries Ltd
Trichem Ltd
Turtle Bay Beach Hotel
Unga Group Ltd
United Finance Ltd
United Insurance Ltd
United Millers Ltd
United Touring Company Ltd
University of Nairobi Library
Vacational Tours & Travel
Valla, Mrs M.
Van Den Abbeele De Nil
Van Leer East Africa Ltd
Vezia R.
Vogue Tours & Travel
Wanderlust Safaris Ltd
Waldbott B.M.
Wienand M.P.
Wiggins Teape Kenya Ltd
Wigglesworth Exporters Ltd
Wildlife Safari - (Australia)
Wildlife Safari - (USA)
Wildlife Safari - (UK)
Williamson (K) Ltd
Worldin Tours and Travel Ltd
WWF (UK)
Yare Safari Company Ltd
Zanbro Ltd.</p> |
|---|---|---|

Subscribe to Swara

*and help conserve
wildlife in East Africa!*

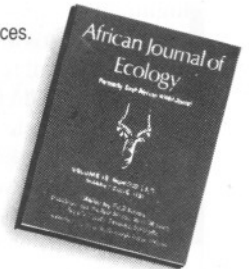


Members of the East African
Wild Life Society receive :



△ Six issues of SWARA
every year posted direct to you

- ▷ A Membership Card which brings you a discount of 10% on all cash purchases over 100/- made in our Society Shop on the mezzanine floor of the Nairobi Hilton building.
- ▷ Access to the new and growing Library in our Society offices.
- ▷ Access to Society week-ends and film shows.
- ▷ A must for all ecologists and serious students of wildlife, the *African Journal of Ecology* (normal price £89/ US \$184) is only £36.75 /US \$49.50 to Society Members.
- ▷ A free Car Windscreen Sticker.
- ▷ The satisfaction of helping conservation



Founded in 1956, the East African Wild Life Society has safeguarded and promoted conservation and sustainable management of wildlife resources and their natural habitat in East Africa. Our belief is that this heritage should be preserved not only for its own sake but also for the benefit of present and future generations.

EAWLS promotes conservation awareness and popular understanding in the rural and coastal areas; sponsors projects and contributes directly to the purchase of materials like vehicles, boats, radios and equipment for the use in the field. Working with governments, non-governmental agencies, local communities, members and supporters throughout the world, EAWLS is backed by a competent Scientific and Technical Committee.

MEMBERSHIP FEES (including Swara subscription)

Addresses in East Africa	Surface	KShs 400/-	Airmail	KShs 700/-
Addresses in rest of Africa	Surface	KShs 750/-	Airmail	KShs 1200/-
Addresses in Europe & UK	Surface	£Stg 22	Airmail	£Stg 36
Addresses in USA, Canada, Australia, Asia, etc	Surface	US\$ 35	Airmail	US\$ 70

East African Wild Life Society is a non-profit making organisation. All proceeds go directly to relevant conservation projects.

LETTERS

'Survival of the swiftest'

I write as a supporter of the East African Wildlife Society and its magazine *Swara* - that promises on most occasions, top class reader appeal.

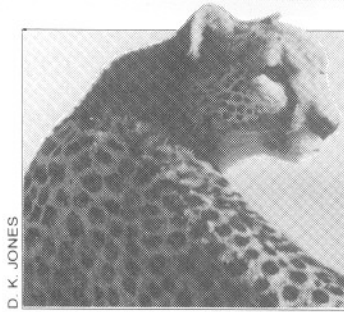
You published an article by Mr Karl Ammann. The contents of this article (March/April 1993) left the reader in no doubt that the author was unsure in what he called his 'astonishing facts'. They left the reader perplexed and confused.

My family and many other readers have followed and supported the progress of this cheetah family and the various ages and stages of their offspring. Articles written over the past several years both by Drummond and Schroder-MacNaughton, and printed in your magazine, have made fascinating reading - so much so that we decided to plan a safari to Kenya.

We came to Kenya and to our delight we saw 'the Mara cheetahs'; they were the highlight of our visit. We were not so lucky to observe these animals eyeball to eyeball as did Anthony Cheffings in his interesting article 'Mass Tourism - Threat or Treat' which appeared well-placed in the same issue of *Swara* - but we did, by chance, meet Drummond in the field. His commitment to conservation has never been doubted. He had requested urgent assistance from the KWS Veterinary Team when it was observed that the cheetahs were diseased. In that hour we learned more about Kenya, the Mara and first-hand news of the cheetahs' plight.

We were not shoof'd away but treated like intelligent human beings and permitted to watch at a respectable distance.

We left fulfilled in the knowledge that someone experienced possessed that



vital ingredient 'commitment and courage', someone *did* care and that Kenya's wildlife was in good hands under the watchful eye of an efficient Wildlife Veterinary Service. We sincerely hope the new experimental 'one shot' drug did the trick and that the cheetahs will once again be totally free from this horrible mangle.

One thing our wonderful safari to the Mara has done for our children - they will never again wish to visit a zoo of cages. Here in England we are treated to the sight of psychotic animals pacing within their cages. Whoever can even think now, to cage wild animals. Thank goodness our zoos are being modified to give animals the nearest possible conditions to their occupants' natural habitat.

Ammann's article, sadly, is rigid and inflexible and seeks only to belittle a committed conservationist. His jumbled facts bear witness that somewhere along the line Ammann came into disfavour with local authority and the Maasai, and indeed those around him - and was left out in the cold.

What matters is that it has been proved that hand-rearing in the wild - no cages, no compounds, no boxes - is possible. Drummond's ideas and techniques had worked. Credit should be given where it is due. Nowhere in his articles does one read of habituation - what one *does* read is care and unusual understanding of these animals and the knowledge that nature's rule is to use it or lose it, and that rigid and

inflexible thinking leads nowhere.

It would be a great shame to lose a perfect practical inroad that has had nature's blessing - a painless way to introduce distant young siblings and genes into a cheetah habitat that is shrinking with continuing ecological degradation and increasing human populations. The incestuous spectre of inter-breeding within the cheetah family groups is already in the Mara. Here is the chance surely, for science to take up the question of even mixing the genes from those of the relic population in Egypt, if they exist - it does not sound too far-fetched or futile.

I hope readers will hear more about Mr Ammann's adventures into the land of the Pharaohs in search of that elusive 'spotted sphinx'.

BETTY JEAN THOMBS
Llandrindod Well Powys Wales

Uganda visit

The article 'The Parks of Western Uganda' which appeared in *Swara*, Vol. 15, No. 6, (November/December 1992) struck a nerve. I was fortunate to visit Uganda in November and December of 1982 and your description of the people and their precious habitat corresponds with my memories. The cordial hospitality of the people in the streets, rangers in the parks and park wardens was particularly engraved in my memory. That was augmented by the plentiful wildlife in an almost Genesis-like scenery. The Murchison Falls on the Nile indeed defy description. I was also fortunate to see elephants mating in the water in Kazinga Channel (Queen Elizabeth National Park) - that was the high point of my observations in Uganda. Definitely, I recommend that Uganda be included in an

itinerary for travellers in Africa.

The other reason I am writing is that I need additional data on the numbers of mountain gorillas and chimpanzees in the shared habitat of the Impenetrable Forest. For more than 13 years I have been developing a hypothesis which incorporates the ecology, anatomy, and evolution of animals living in a particular habitat. Specifically, I need data such as estimated number of two types of animal which live in the same habitat. I also need information such as what type of habitat it is in general terms. It would be sufficient if you would categorize the shared habitat in which the mountain gorilla and chimpanzee live - enough to classify it as a habitat suitable for generalist (euophagic) or specialist (stenophagic) animals.

Thanks you very much.

JEHESKEL (HEZY) SHOSHANI
*Research Associate,
Cranbrook Institute of Science
106 East Hickory Grove Rd.
Bloomfield Hills, Michigan 4830 USA.*

New Magazine on wild plants and habitat to be launched

I am planning to establish a new magazine, devoted exclusively to nature photography and focussing on wild plants and their habitats. For this purpose I intend to contact people all over the world who are involved in nature photography, either professionally or as a hobby, and who would be interested in an attempt to publish their work.

Anyone who is interested in this plan and who would like more information, or who has any helpful suggestions, can contact me at the address below.

FOPPE BROLSMA
*Hegdambroek 1726 6546 VX
Nijmegen, Netherlands*

Reader takes issue with March/April issue.

I want to ask just one question. What happened to *Swara* magazine since the Jan/Feb 1993 issue? It is a disaster.

The new format is very disappointing to me. Whose idea was it to change it? What was wrong with the old format? Did anyone complain about it? I can't imagine why it was changed!

Look at page 3 of the new issue, the names of the Corporate Members are in such small print you can hardly read it! They should be listed as they were before, in vertical columns, in alphabetical order, if I were Corporate Member I would complain **LOUD AND CLEAR!**

Where is the Letters column? It is the first thing I read each month: don't discontinue it.

Why were not the members informed of the forthcoming changes? I am disappointed in you.

LAVERGNE G. NOVAK
221 Ohmsted Rd. Riverside, Ill. 60546

EDITOR'S NOTE

Readers may have noticed that "Swara" has undergone a number of design changes in the last few issues.

This is due to the fact that we are still experimenting with an acceptable format that will keep us on par with the rapid changes taking place in graphics and communication.

However, we shall soon decide on a design that is modern, attractive and easy to read.

In the meantime, "Swara" readers are asked to please bear with us during this transition.

Address all correspondence to:
The Editor,
Swara Magazine,
P.O. Box 20110
Nairobi, Kenya, East Africa.

Letters should preferably be typed and as brief and clear as possible. The Editor reserves the right to edit letters for space and clarity.



See Kenya with Vacational!

"Excitement! Adventure! Luxury! Relaxation! ...Treat yourself to rare experiences. Vacational will introduce you to spectacular vistas of wildlife; eons of traditions, a legacy from the past; oases overlooking crocodile rivers; misty, magical rift valleys; stunning blue skies, powder-white beaches and swaying palms; tropical cosmopolitan cities - your holiday with Vacational will be an unforgettable experience. Let Vacational arrange your accommodation and transport to any one of Kenya's superlative beauty spots. We will take care of all the details to ensure that you have a luxurious and special holiday."



The Holiday Makers

P.O. Box 44401, Nairobi Tel: 223312 Fax: 210530

DISCOUNT TRAVEL SERVICES LIMITED

We cater for your special and exotic safaris in Kenya, Uganda & Tanzania



- Tours and Travel arrangements
- Car Hire - Self Drive/Chauffeur Driven
- Hotel/Lodge Bookings
- Luxury Safaris/Air Charters
- Incentive/Group Travel

Call on us for most reliable and efficient service. Our pricing is the most reasonable.

Discount Travel Services Ltd.

3rd floor Continental House Uhuru Highway
P.O. Box 20192 NAIROBI Kenya
Tel: 340180 / 225299 Fax: 212992

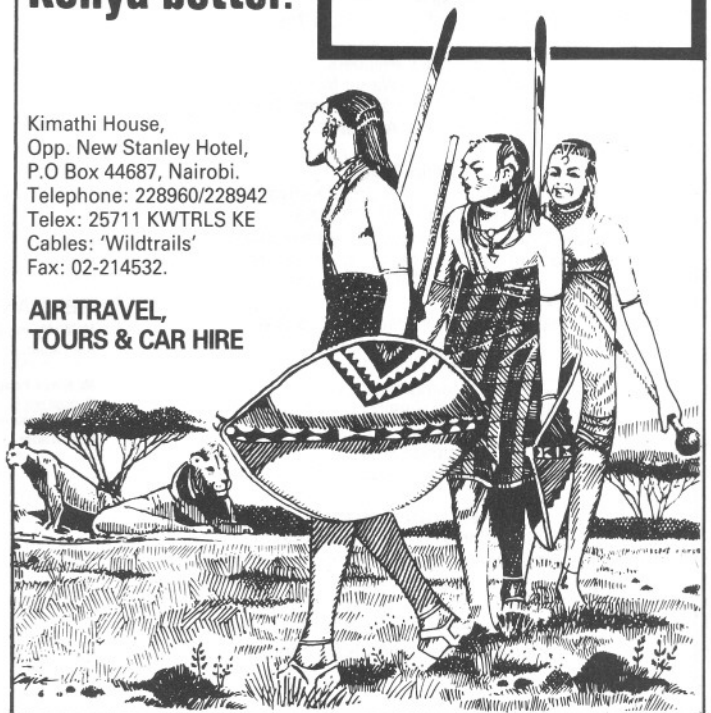
Our Name Says It All!

Follow the trail with us. The people who know Kenya better.



Kimathi House,
Opp. New Stanley Hotel,
P.O. Box 44687, Nairobi.
Telephone: 228960/228942
Telex: 25711 KWTRLS KE
Cables: 'Wildtrails'
Fax: 02-214532.

AIR TRAVEL, TOURS & CAR HIRE





EAST AFRICAN WILD LIFE SOCIETY

Patrons:
President of Kenya
President of Tanzania
President of Uganda

The East African Wild Life Society was formed in 1961 by amalgamating the Wild Life Societies of Kenya and Tanzania (both founded in 1956).

Executive Director:
Nehemiah K. Rotich

Chairman: Dr Theuri Njoka

Vice-Chairmen: David Andere,
Dr Cornelius L. Mollie
Prof Derek E. Pomeroy

Treasurer: Andrew K. Mbaya

Trustees: Prof Fredrick I.B. Kayanja, John Koitie
Albert Mongi, George Muhoho, Hilary Ng'weno
Hon William A. Ole Ntimama

Hon Vice-Chairmen: Mervyn Cowie CBE ED
Michael Werikhe, James H. Webb

Elected Members of Council:
Dr Theuri Njoka, Nathaniel arap Chumo,
Fleur Ng'weno, Prof Steven Njuguna,
Dr Reardon Olubayo, Mary Rigby, Daniel Choge

Members of Management Committee:
Nehemiah K. Rotich (Chairman),
Mwamba Shete (Secretary)
Nathaniel arap Chumo, Andrew K. Mbaya,
Justina E. Muchura

Members of Scientific & Technical Committee:
Dr Reardon Olubayo (Chairman) - *Species survival*
Dr Theuri Njoka - *National Parks*
and other protected areas
Nathaniel arap Chumo - *Conservation Education*
Dr Francis Muthuri - *Wetlands and*
marine resources
Wilberforce Otichillo - *Forest resources*
and water catchments
Nehemiah K. Rotich, Justina E. Muchura, Mwamba Shete

Honorary Members:
M. Bishop, P.A. Walker-Munro,
James H. Webb, Webb & Sons Incorporated, Toyota Kenya,
Chas G. Allen Jr

Head Office
P.O. Box 20110, Nairobi, Kenya.
Tel: Nairobi 748170/1/2/3
Director's Office, Swara and Administration
on the 2nd floor, Museum Hill Centre,
Museum Hill Road, Nairobi.

Society Shop and Membership Sales
on the mezzanine floor,
Nairobi Hilton Arcade
and Museum Hill Centre.
Telephone: 331888/221780/214758

Uganda Branch
P.O. Box 7422 Kampala, UGANDA

Netherlands Branch
Stichting EAWLS Netherlands
Burg. Verheullaan 59, 2396 EP Koudekerk a/d Rijn
NETHERLANDS.

Members are requested to address any
queries to the Executive Director.

REPRESENTATIVES WORLDWIDE

ARGENTINA

Miguel A. Tauszig
Av Libertador 17066
1643 Beccar
PCIA. BUENOS AIRES

AUSTRALIA

Mr Chandra Patel
21 Stirling St
Tosmore
Adelaide 5065
SOUTH AUSTRALIA
Mrs E. Moore
16 Nearwater Way
Shelley 6155
WESTERN AUSTRALIA
Mr Stephen Cameron
1st floor
259 Coventry Street
South Melbourne VICTORIA 3205
A.B. Steel (Geoff)
P.O. Box 703 South Perth,
and 3/33 Park St.,
Como, South Perth 6152 VICTORIA

AUSTRIA

Prof Dr Hans Norbert Roisl
Uhplatz 5/8
A-1080 WIEN

BAHRAIN

Jean-Christophe Duran
P.O. Box 5410
MANAMA

CANADA

Miss Laura Friis
2245 Victor St Victoria
BRITISH COLUMBIA V8R 4C6
Robert R. Taylor
944 Windermere Ave
Winnipeg
MANITOBA R3T 1A1

CHILE

Dr A.M. Mattoli
Casila 4
SAN FRANCISCO DE MOSTAZAL

DENMARK

Mr Bo Finn Poulsen
Worsaaesvej 2
1972 FREDRIKS BERG G

ETHIOPIA

Dr J.C. Hillman
Wildlife Conservation Organisation
P.O. Box 386 ADDIS ABABA

FINLAND

Mr. Tom Kumlin
Munkkiluodonkuta 6A3
SF-02160 ESTOO

GREAT BRITAIN

Mr. David Keith Jones
11 The Windings
LICHFIELD WS13 7EX
Mrs P. Stubbs
Sloane Square House
LONDON SW1X 9LU
Mr Andrew C. Fentiman
83 Gloucester Place
LONDON W1H 3PG

GERMANY

Mr Wolfgang Doring
Am Tarpenufe 55
D-200 NORDERSTEDT
Mr Klaus Fenger
Zugsplatzstr 65
8100 GARMISCH - PARTENKIRCHEN
Rolf Weber
Dieselstr. 67
D-5650 SOLLINGEN - WALD
Jutta & Dirk Ohlerich
Schutzbaumstrasse 50
D-6050 OFFENBACH

GREECE

Mr Solomon Githinji
6 Tychis St. ATHENS 11253

HOLLAND

Mr J.W. Elzenga
Burg Verheullaan 59
2396 EP Koudekerk
A/D RIJN

ISRAEL

Dr Avner A. Shargil
11 Shapira St.
PO Box 765 PETAH-TIKVA

ITALY

Mr Nicolao Giorgini
Via Pietro Calvi 19
20129 MILANO

JAPAN

Mr Matsuo Tsukazaki
2-9-2 Shibuya Shibuya-Ku
TOKYO 150

KENYA

Mr Mark Easterbrook
PO Box 208
MALINDI
Mr Suthar Kiran
PO Box 1000
MERU

MEXICO

Mr & Mrs Enrique Mondragon
Pancheco
Coahuila No 603
CELAYA GTO

NEW ZEALAND

Mr Bruce Gardiner
33 Willoughby St
PAEROA

NORWAY

Mr J.E. Johnsen
Munkerdelven 41A
OSLO 11

PAKISTAN

Mr Abdi-Ghani Sindhi
2225 Resham Gali
Hyderabad
SIND

SWEDEN

Mr Hugo Berch
Kungsgatan 16
261 31 LANDSKRONA
Dag Peterson
Pl. 3550, Salgtsered
S - 510 20 FRITSLA

TANZANIA

John Vincent Bennett
PO Box 1410
MOSHI
Mr. & Mrs Olson Pettersson
P.O. Box 458
MOSHI

UGANDA

Dr. Eric Edroma
PO Box 4596
KAMPALA

U.A.E.

Mrs E.A. Sheppard
PO Box 6000
DUBAI

USA

Mr K. Tucker
Chief American Rep,
PO Box 82002
San Diego
CALIFORNIA 92138
Trevor Fernandes
346 Rheem Boulevard
Moraga, CA 94556
R. Simmon
4705 North 68th Place
Scottsdale
ARIZONA 85251
Mr Marc Colen
20137 Gilmore St

Canoga Park
CALIFORNIA 91306
Cheryl S. Kuck
2332 Village Green Blvd
Plant City
FLORIDA 33566

Michael Banks
1054 Kane Concourse
Bay Harbour Islands
FLORIDA 33154

Mr. Gordon Crombie
2725 Park Ave
Franklin Park
ILLINOIS 60131

Sanford Takiff
P O Box 546
Highland Park
ILLINOIS 60035

Gary K. Clarke
Private Bag 4863
Gage Centre Station
Topeka

L.W. Baer
RDI Box 478
Kennebunkport
MAINE 04046

Mr C.G. Allen Jr
Barre
MASSACHUSETTS 01005

Mr Ronald Bergman
13 Briarwood Road
Framingham
MASSACHUSETTS 01701

Ms Barbara Meyers
29 Lyman Avenue
Staten Island
NEW YORK 10305

Mr Peter Bakker
175 West 79 St # 10E
New York
NEW YORK

Melanie Mehlenbacher
P.O. Box 430
Trumansburg, NY 14886

Tel: 607-387-6292
Fax: 607-387-7538
Safariworld USA
425 Madison Ave
New York
N.Y. 10017 USA

George F. Roosz
61 Forest Ridge Drive
Worthington
OHIO 43235

Neil M. Krebsbach
7875 Strawberry Hill Lane
Maineville
OHIO 45039

Colin R. Barnes
1700 Barlow Dr Apt 103
Bartlesville
OKLAHOMA 74006

Evelyn Bloom
1067 NE Cochran Dr
Gresham
OREGON 97030

Donna B. Shaver
1122 SE 31st
OREGON 97214

James Archer
855 Springdale Drive
Exton
PENNSYLVANIA 19341

Mrs Michael McMillan
9 Club Pointe
Taylors
SOUTH CAROLINA 29687

Grant and Barbara Winther
11771 Sunset Ave N.E.
Bainbridge Island
WASHINGTON 98110

Mr Walter Stein
4190N, 53rd St
Milwaukee
WISCONSIN 53216

WILDLIFE CLUBS OF UGANDA: Starting all over again



by Dr Kajubiri-Froelich,
General Secretary,
Wildlife Clubs of Uganda

After years of neglect and frustration during the political storms of the past, the Wildlife Clubs of Uganda are ready to resume their rightful role.

Dr Kajubiri-Froelich is a biologist, specialising in Parasitology. She is very optimistic that the Wildlife Clubs of Uganda can contribute much to the course of conservation education in Uganda. For any comments, suggestions, contributions etc. contact: Wildlife Clubs of Uganda, P.O. Box 4596, Kampala Nkrumah Road, No. 17 Kampala. Tel: 256534

THE WILDLIFE CLUBS OF UGANDA is a non-governmental organisation founded in March, 1975. It is the oldest conservation education organisation in the country and has the largest membership of nearly 700 registered clubs, most of which are institution based.

The aims of the organisation are: to cultivate a desire for environmental conservation amongst the people of Uganda and East Africa as a whole; to promote an appreciation and scientific study of the country's wildlife and environment, and to promote the realisation of the country's natural resources.

For about 25 years since her independence, Uganda has had little to be proud of in the light of economic and political environment. Political turmoil led the country into economic doldrums and inevitably, the Wildlife Clubs of Uganda had their share of the crisis. Morale among patrons, members and even among the skeleton staff at the secretariat fell. Most clubs existed in name only and due to lack of transport and funds for material production, the education department, a key department, went silent for years – no posters, no brochures, no mobile film unit, no program of any kind over radio or television.

Within this apparent hopelessness, the clubs somehow managed to survive these economic and political storms. The Director of Uganda National Parks, Dr Eric Edroma, who has also been the Chairman of the Governing Council of the Clubs since their inception, was instrumental in keeping the Club going. During the General Assembly of Clubs' Representatives which took place on 27 March 1993, he said, 'Soon after the political problems began in the late-seventies, the Clubs experienced serious administrative, managerial and financial problems. However, this negative situation has been reversed completely over the past two years.' Together with his Council, Dr Eric Edroma deserves many thanks from all Clubs in the country. Other bodies which have come in to assist the Clubs include WWF, ANF, EAWLS, UNICEF, Africa 2000, USAID, ICCE, UNDP, IUCN, the Sheraton Hotel and many others.

For most of 1992, Wildlife Clubs have been running a project jointly with the Panda

Clubs of Italy, called 'Young People United'. The basic concept of this project is co-operation, sharing ideas between youth of Uganda and those of Italy especially on issues concerning their respective environments. This project produce newsletters which soon became popular and are still in high demand.

Another project now is a government executed UNDP project. There is also the GEF programme under which the Clubs hope to get funds for a fully fledged Mobile Film Unit. For most of the past years, the Clubs continued to carry out their traditional Wildlife Awareness Week in spite of financial constraints. It is only in 1992 that this event was jointly carried out with Jane Goodall Institute in Kampala which climaxed at Entebbe.

It is important to point out that to-date, the WCU is a member of the National Advisory Committee of 'NEAP' (a body charged with the duty of formulating a national environmental management policy). WCU is also a member of the National Steering Committee of GEF project, and was Secretary to the National Committee on the preparation for the Earth Summit. WCU is also a member of the Selection Committee of Voice of the Children International Campaign.

The Clubs are now coming out of the doldrums and already future strategies have been set. A Strategic Planning Session was conducted in Jinja in January 1993. With a mission in mind, the Clubs now aim at decentralization through creation of District Wildlife Associations. In time, the clubs now look forward to the resumption of television and radio programmes on conservation education and use of other media such as newspaper, posters, brochures, postcards and others. Co-operation with other NGOs is also a priority.

The clubs are ready to fulfill their mission of conservation education among the youth of Uganda and to offer opportunities for their participation in conservation activities. They are resuming their rightful role at a time when natural resources and ecosystems are under increasing commercial and human pressures. The secretariat is doing the very best it can, for, to quote a famous sage, 'nobody made a greater mistake than he who did nothing because he could do only little'.

Migration: JOURNEY OF LIFE

by Barbara Sleeper

An astounding array of animals take their show on the road.

'The selection of migration routes, transitory stops, and final destinations - often used for hundreds or thousands of years - is usually based on stringent environmental parameters critical to each species'

Facing page (from top to bottom):

Sandhill cranes in flight, New Mexico, U.S.A: among birds, migration has been perfected to a fine art;

Spawning sock-eye salmon, Woonah River, Alaska: salmon rely primarily on olfaction to relocate their freshwater birth streams;

Monarch butterflies, overwintering in central Mexico, actually take several generations to reach their destination in Canada;

Burchell's zebra drinking: elimination of migration routes is one of the greatest threats to Africa's great herds;

Temporary safe haven: to prevent loss of breeding grounds and critical refuelling stops, urgent international action is needed;

Ladybug swarm, hibernating in California's Sierra Nevada foothills, before returning to the upper valleys to complete their life cycle.

IT WAS LATE JUNE. THE HUMID NIGHT AIR PULSED with frog calls. Most Jamaican natives and beach-weary tourists had long called it a day. Yet in the moonlight, along a deserted stretch of Jamaican coast road, a seeming invasion of white, alien crustaceans had beached and were moving inland. Poised at the edge of the road, or raised up on eight legs as they boldly side-stepped across the pavement, were Jamaica's large, feisty land crabs returning from their annual reproductive migration into the sea.

South Africa is the setting for yet another remarkable wildlife exodus. Termites - sprouting wings for the occasion - periodically disperse from their nests to recolonize, emerging from the ground in incredible numbers to take to the air. Their appearance creates a veritable feeding frenzy among predators suddenly made brazen with the food explosion. By day, snakes, toads, and lizards gulp down the insects on the ground, while swallows catch them on the wing. At dusk, bats swoop after the airborne insect morsels as nocturnal rodents and reptiles continue the feast below.

Everywhere, it turns out, creatures big and small are on the move. Salt-marsh aphids float on the sea surface, and rice leaf-hoppers hitch rides with south-westerly weather depressions from central China to Japan. Geese have been spotted flying over India's Dehra Dun - at altitudes of 29,500 feet - while African antelope and zebra migrate between dry season water holes and rainy season browse. And, in the deep oceans, the world's great baleen whales swim thousands of miles each year between warm-winter calving areas and polar feeding grounds.

Strictly defined, migration is the regular, usually seasonal movement of all or part of an animal population to and from given areas. More broadly, it is the movement of any organism from one habitat to another. Such movement usually occurs horizontally, from a few miles to several thousand miles.

But migration can also occur vertically. Planktonic crustaceans such as krill and squid remain at great depths during the day, then rise to mass in the upper water layers at dusk. Certain birds, mammals, and insects migrate up and down mountain side, frequenting upper zones to breed, and the foothills or plains to avoid harsh winter weather.

Animals make these pilgrimages for a variety of reasons: to mate, to find food, to exploit seasonal resources, for warmth, or to find adequate space to establish territories and raise young. The animals' movements are often triggered by an interplay of

environmental factors - food availability, weather conditions, and day length - coupled with the intricate workings of an animal's endocrine glands, such as the pituitary, which influences both reproductive development and metabolic rate.

The convergent ladybug hides in the forest litter of California's Sierra Nevada foothills - 30 million per quarter acre - passing the winter months in a state of dormancy until temperatures rise, along with their hormones. Then they return to the upper valleys, mate, lay eggs, and die.

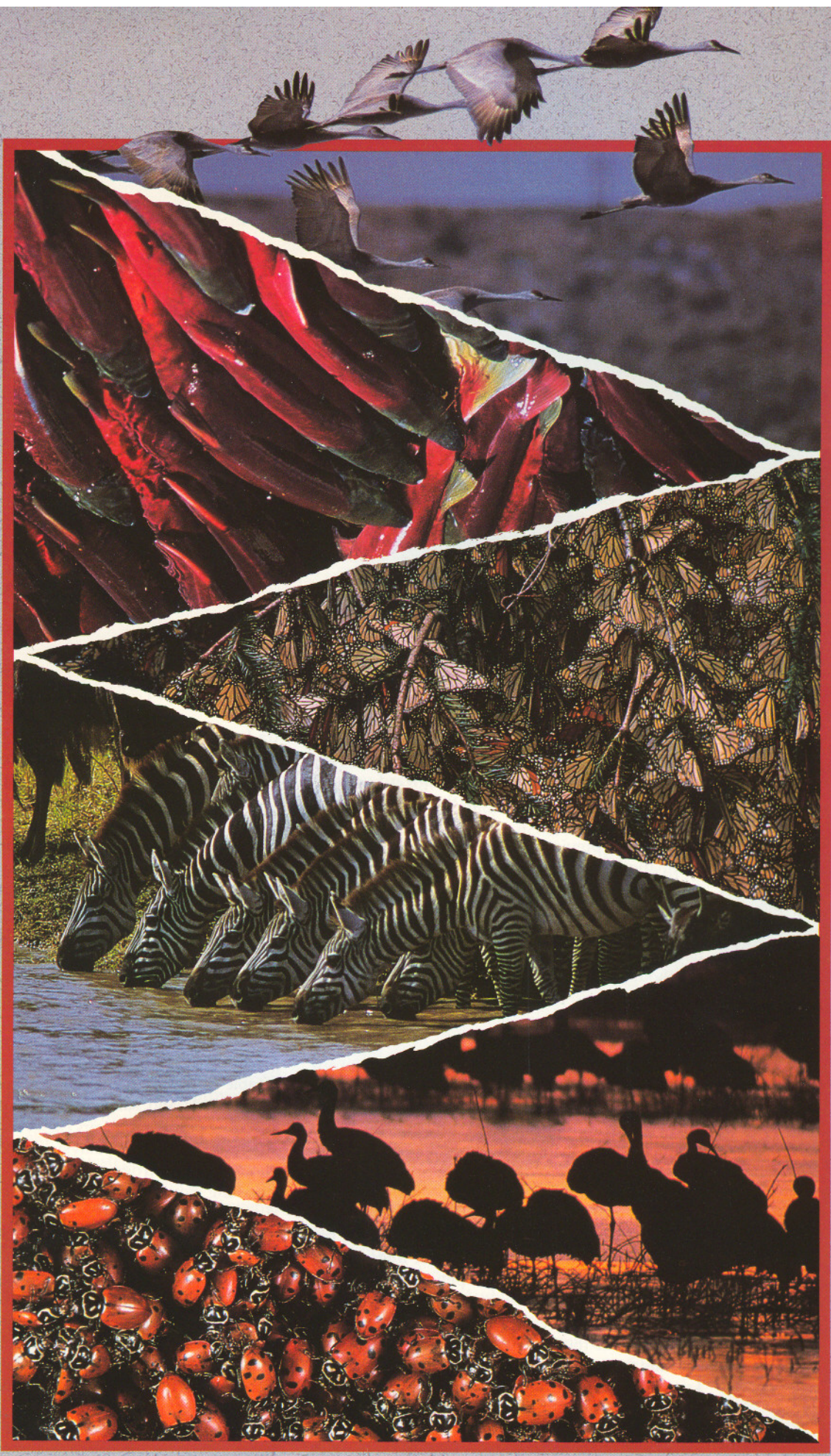
The selection of migration routes, transitory stops, and final destinations - often used for hundreds or thousands of years - is usually based on stringent environmental parameters critical to each species' survival.

Take the case of the monarch butterfly. In central Mexico, millions of monarch butterflies from the eastern United States and as far north as Canada overwinter in a state of semidormancy, clinging together tightly on fir branches. All the trees in a three-acre area are jewelled in orange and black, their branches bending under the mass of 30 to 100 million butterflies.

None of these butterflies has ever been to the roost site before. But this sheltered forest on the cool, north-facing volcanic slopes, at altitudes above 9,000 feet, fits the monarch's needs perfectly. Low moist cloud cover prevents desiccation, and the tree canopy protects against winds and frost. Most important, the site provides the right temperature range - 40 to 60 degrees Fahrenheit - for the monarch's low metabolic winter. Within this range it is warm enough to keep the insects from freezing but not so cool that the insect can fly and interrupt their dormancy.

But what makes this species migrate so many miles, and how does an entire generation of insects find their way to the winter roost? The monarch's biological roots trace back to the tropics, but evolution eventually gave the butterfly a unique adaptation: it is the only species in its family to exploit the summer crop of North American milkweeds. More than 100 different species of milkweed plant provide a place for the butterflies to lay their eggs, as well as sustenance for the caterpillars. Since milkweeds contain cardiac glycosides that are poisonous to some of the insect's predators, the monarch enjoys some special protection.

But to take advantage of this northern plant, the monarch butterfly must undertake its migration. Weighing one-fifth of an ounce, the fragile insect can



ART WOLFE

ART WOLFE

RICK EDWARDS

ART WOLFE

ART WOLFE

ART WOLFE

Creatures great and small on the move



The annual Serengeti/Mara wildebeest migration is one of the world's most spectacular land animal movements.

fly 80 miles in a day. After wintering in Mexico, the butterflies reach their summer destinations by leap-frogging successive generations northward - several are born, breed and die before the last generation reaches Canada.

With no previous knowledge of the route or destination, the last generation fuels up on flower nectar, then flies 2,000 miles south to their winter roosting sites. Because arriving butterflies are many generations removed from the relatives that flew north the previous spring, their southern migrations are thought to be an inherited behaviour pattern - learning plays no role.

Many fish also migrate. While the eggs, larvae, and young passively drift with the ocean currents, adults usually swim against the currents toward specific breeding areas. Oceanic fish such as cod and herring return to the same spawning grounds year after year, swimming hundreds of miles to do so. The red tuna spawns in the western Mediterranean Sea in May and June, then swims north until it reaches the Arctic Ocean.

Much studied due to their commercial value, salmon are typical of fish that live in the sea but migrate to freshwater to breed. After migrating as much as 10,000 miles in the open ocean, a Pacific salmon returns to spawn within yards of its birthplace.

Salmon probably use topographical features to navigate, but they rely primarily on olfaction to relocate their freshwater birth streams. Fish have a keen sense of smell, and each river has its own odor signature created by the vegetation and soil. Genetically determined odors that emanate from the salmon themselves also play a part. Because adult salmon return to their natal rivers soon after smolts descend the river, it is thought that returning salmon home in on familiar pheromones released by kin at

traditional spawning sites.

European eels show a reversed pattern. They reproduce at sea, but spend most of their 20-year life cycles in fresh water. Spawning takes place in the famed Sargasso Sea at a depth of 1,300 to 2,300 feet. The eggs are then carried by the Gulf Stream across the North Atlantic in a drift migration that takes two and a half years to complete. By the time the eggs have metamorphosed into three-inch-long immature eels, they have reached European coastal waters, where they migrate by the millions into freshwater streams. Following a 10 to 15-year maturation period in freshwater, the eels then turn silver, their eyes enlarge, and they migrate phenomenal distances back to the Sargasso Sea to spawn and die.

While most reptiles and amphibians are physically unable to travel great distances, certain species of frogs, toads and salamanders return to the same breeding ponds and rivers each year. In Krau Game Reserve in Central Malaysia, hundreds, possibly thousands, of frogs gather in a mating orgy - croaking, hopping, splashing and coupling. A few days later, they are gone.

Galapagos tortoises haul their giant bodies across 30 miles of rough terrain from the humid upper slopes of the archipelago's smoldering volcanoes, where food is abundant, to the dry zone below, where they lay their eggs. Many green sea turtles lay their eggs on the coast of Costa Rica in Central America, then disperse through the Gulf of Mexico and the West Indies - swimming as much as 300 miles in 10 days.

Hoofed mammals are also on the move. Wildebeest, zebra, springbok and oryx are the great migratory species of Africa - their movements dictated by the wet and dry seasons. In North America, caribou migrate to the Arctic tundra in summer and to North

America's more southerly forest line in winter. Elk, mule deer and Dall sheep also migrate where wilderness areas remain intact.

Among birds, migration has been perfected to a fine art. Most species require a rich, abundant food supply to fuel their high metabolic rates - a supply rarely available year-round at any one location. To compensate, many species have evolved efficient means to travel quickly over long distances to tap seasonal food resources.

MOST REMARKABLE IS the migration of the tiny, ruby-throated hummingbird found east of the Mississippi River. During summer they migrate as far north as Canada, in winter as far south as Mexico and Central America to Panama. To do this, many must make a nonstop, 500-mile flight across the Gulf of Mexico - quite an avian feat considering that these high-metabolic hummers usually need a constant supply of flower nectar to maintain wing beats of 50 to 75 strokes per second. Scientists have estimated that a premigration weight-gain of two grams provides the fuel necessary for this hummingbird to fly 800 miles.

Equally impressive, the blackpoll warbler loses half its body weight during a four-day, 2,400-mile migration between Nova Scotia and South America. In terms of flight energetics, this represents a fuel efficiency equal to 720,000 miles per gallon.

Migration

Scientists have long attempted to keep track of migratory animals to learn where they go. But knowledge about how animals accomplish their long-distance navigational feats largely remains shrouded in mystery. Their uncanny sense of direction is particularly puzzling. If nothing else, research in this area continues to show that animals have sensory perceptions that far surpass those of people.

For starters, pigeons can 'see' ultraviolet light and hear low-frequency sounds generated thousands of miles away. Fish not only can hear and smell, but some, like sharks, also generate their own electric fields to navigate through murky water. The desert ant's eyes have 1,000 optical lenses to our one. Eight of the ant's lenses are adapted to receive polarized light. Recently, biologists painstakingly proved that ants plot compass direction by using polarized light patterns from the sky - and may reckon distance by actually counting their tiny steps.

Some birds migrate by day, others by night. By aiming telescopes at the moon, it was discovered that most nocturnal flights occur between 10 p.m. and 1 a.m. Such night fliers appear to navigate by the position of the stars. Daytime fliers tune into the sun for direction - and may be guided by the earth's magnetic field on overcast days. Birds also seem to have an internal clock that helps them compensate for the sun's changing position. Similar mechanisms have been proposed for some insects, crustaceans and fish.

But these feats of migration are not without their own inherent dangers. By massing during migration, many species create a movable feast for an array of predators. Wolf packs follow migrating herds of caribou. Lion prides experience a cycle of

feast or famine determined by when herds of wildebeest and zebra pass through their territories. And peregrine falcons have been known to join flocks of their preferred prey.


Timing is everything for migrants. Arrive in the Arctic too early, and snow cover, lack of food and cold could weaken a bird so it would be unable to breed. Arrive too late, and food may run out and the weather may deteriorate before the young are fledged. In species where quality of territory affects mate acquisition and reproductive success, males must arrive early enough to stake out a good territory, but not so early as to weaken and be unable to defend it against stronger, later-arriving meals.

Worse yet is the loss of migration corridors, breeding grounds, or critical refueling stops along long-established routes. Elephants, once able to move over large areas of the African continent to find adequate food and water, are now restricted to national parks and preserves whose vegetation they ravage and whose boundaries they ignore, making them easy targets for poachers. Similarly, many of Africa's great herds of migratory animals - wildebeest, springbok, eland and zebra - have their numbers drastically reduced with the elimination of the migration routes. One migrating wildebeest herd made it past fences blocking its route only to find a crucial water stop, a lake, was drained for diamond mining. The animals perished.

Hydroelectric dams built along the Columbia and Snake rivers in the U.S. Pacific Northwest and irrigation diversion, coupled with drought and overfishing have nearly eliminated many populations of the once-abundant Pacific salmon. To make matters worse, escaped hatchery-bred salmon are breeding with wild salmon - diluting the genetic programming required for the wild salmon to return to their historic spawning areas.

WHILE GREAT EFFORTS may be made to protect migratory species in one state or country, their critical migration habitats may be decimated in others - or they may be hunted or poached along the way. According to the U.S. Fish and Wildlife Service, there are more than 5 million migratory hunters in the United States alone.

British biologist David Aidley said of migrants: '...they act as though they were adventurous, intrepid, free, as though they solved their problems by taking action. They stir the imagination.' They also are a poignant reminder that so many of our natural resources are finite, and as such, need careful protection.

Biostatistician Carol Fahrenbruch, a volunteer bird-counter for the Seattle Audubon Society best summarizes the impact of habitat loss on migratory species. 'How would you feel if you returned home one day to find your house completely eliminated - no trace of it left,' she asks. 'That is exactly what many migratory animals - who may be extremely site, shrub, or even nest-specific - are now experiencing around the world.' One of the first indications that something is environmentally amiss is when migratory species return, their numbers drastically reduced - or, more ominously, when they do not return at all. 

Scientists have long attempted to keep track of migratory animals to learn where they go. But knowledge about how animals accomplish their long-distance navigational feats largely remains shrouded in mystery.

S AFARIS IN KENYA & TANZANIA



Very little needs to be said of the diverse attractions of Kenya and Tanzania. For decades the two countries have been synonymous with wildlife adventures unsurpassed anywhere in the world.

Ayexam Safaris, newly established in the field of safari operators, combines these two great safari destinations with the experience of its directors, who have been in the business for a considerable time to offer to you an adventure that will live for ever in your memories. Write to us, **Aisha Osman** or **Anthony Miranda**, for details of our safaris. We look forward to arranging your lifetime safari experience.



Rank Xerox House, Westlands
P.O. Box 11091, Nairobi, Kenya
Telephone: 747981 Nairobi
FAX: 746588 Nairobi

Sustainable Forestry

THE CASE OF THE BUDONGO FOREST, UGANDA

Story by Vernon Reynolds
and photos by Andrew Plumptre

Why has Budongo survived where so many have failed?



'For magnificence, for variety of form and colour, for profusion of brilliant life, the forests of Uganda eclipse all previous impressions.'

WINSTON CHURCHILL

TWO DECADES OF CIVIL UNREST HAVE BROUGHT Uganda to an environmental turning point: what few natural resources remain can be secured and re-admitted into the economy, or they can be used up and forgotten. President Museveni's government is committed to environmental protection, but the problems are large and the resources to deal with them small.

In a speech to a conference on the environment in 1989, he summarised the problem by saying, 'The assault on the environment in industrialised countries arises partly from their wealth, while in our poor countries, ecological destruction is perpetuated by poverty...Unable to increase productivity from their limited resources and unaware of the inevitable consequences, our people resort to practices that amount to ecological suicide.'

Since the beginning of the century, Uganda's forest cover has been reduced from 12 per cent to 3 per cent, not surprising when you consider that 90 per cent of its growing population is dependent on wood for cooking, heating and building materials. This is a common picture for African countries. Projecting the trend, one might conclude that the remaining forests in Uganda are doomed, but with effective planning this need not necessarily be so.

Responsibility for managing the forests lies with the Forest Department, which is committed both to their protection and their development as economic assets. However, diminishing stocks of high quality mahogany and other favoured timbers has led the Forest Department to consider seriously forest tourism as a means of generating revenue, not necessarily to the exclusion of logging, but as part of a policy of multiple use of forest resources. It is widely believed, for example, that the chance to observe wild chimpanzees has yet to be appreciated by the developed world, and that in the long term it could generate more income for countries like Uganda than logging alone.

When applied to tropical forests, the word 'logging' conjures up mainly negative feelings. Visions of smouldering tree stumps, of tribal peoples dispossessed and driven out of their homelands, of species lost through habitat destruction - these are the stock in trade of the media and there is truth in them. What is less widely known is that logging is

not always a disaster, that forests can be and have been managed wisely in some places at some times.

A case in point is the Budongo forest in Uganda (see Map 1 and Box 1). This is a tiny forest by Amazonian or Malaysian standards, a mere 435 square kilometres in extent. But it is one of the largest and most beautiful forests in Uganda, much impressing Winston Churchill when he walked through it in 1907: 'I had travelled through tropical forests in Cuba and India, and had often before admired their enchanting, yet sinister, luxuriance. But the forests of Uganda, for magnificence, for variety of form and colour, for profusion of brilliant life - plant, bird, insect, reptile, beast - for the vast scale and awful fecundity of the natural processes that are beheld at work, eclipsed, and indeed effaced, all previous impressions.'

The commercial development of Budongo began in 1905 when a permit was granted to a European firm for the tapping of wild rubber (*Funtumia elastica*). Tapping continued until 1910 when the price of wild rubber slumped. Until 1910 no attention was paid to Budongo's huge timber potential. In 1910, however, Mr M.T. Dawe of the Botanical and Scientific Department of Uganda surveyed the economic resources of the forest and made a very accurate assessment of the richness in timber species. His confidential report was pigeonholed and all but forgotten.

Some mahoganies (for example *Khaya anthotheca*) were felled and hand-sawn over the next few years and in 1925 a circular saw was erected just outside the forest, operating on trees cut by special permit. The owner of the saw went into liquidation, however, and it was not until 1930 that mechanised logging recommenced, with a licence to exploit a small portion of the main forest block being offered to the British sawmiller, Buchanans. This venture was economically successful and the forest continued to be exploited by Buchanans under guidance from the Forest Department until the mid 1960s. The sawmill was then bought up by an Asian company and continued functioning for several years until the Asian community was expelled from Uganda, and the country's infrastructure collapsed under Idi Amin. Today it operates but at a very low level. During its heyday, the sawmill took orders

from such illustrious places as the Royal Festival Hall in London, for whom parquet flooring was supplied for the foyer.

Uganda's richest mahogany forest may have lost most of its big mahoganies today, but it remains a fine forest, luxuriant and full of wildlife. With greater knowledge of the forest's ecology and continued good management the remaining mahoganies, mostly young at the present time, could be returned to full size and logged again.

The key to understanding why Budongo has survived where so many forests have not is the term 'selective logging', which has to be clearly distinguished from 'clear felling'. Both are management policies, but in the context of tropical forests, the former can, at best, truly be called 'harvesting', while the latter is brutal one-off exploitation with no thought for the future. With selective logging tree harvesting is cyclical, that is, trees are extracted from a particular region, or compartment, of the forest over a defined period of time, following which extraction moves elsewhere, returning to the same compartment only after sufficient time has passed for regeneration to occur. Only the largest trees are felled, the young ones being left to reach maturity before the cycle repeats. As a further precaution, certain tree species may be spared felling if they are becoming too scarce. In the case of Budongo

the rotation period was set at 120 years, with two felling sub-cycles of 80 and 40 years.

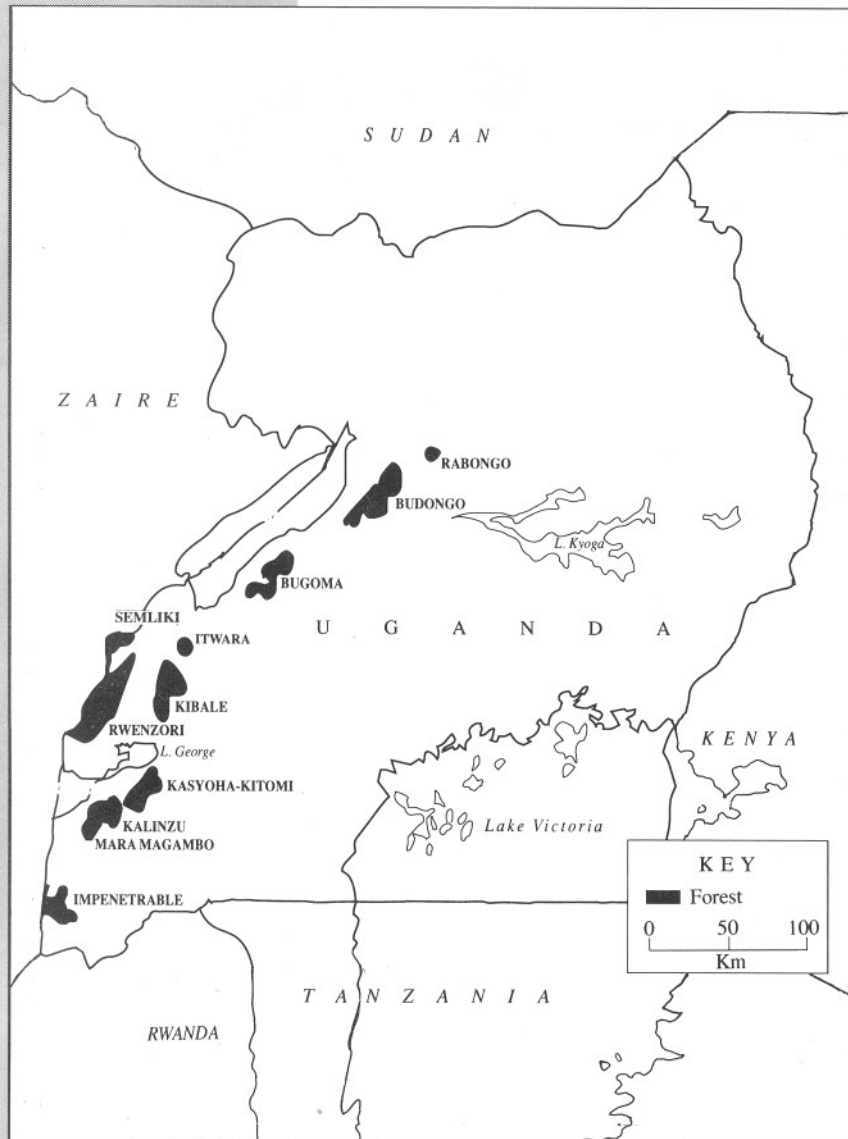
BEFORE A compartment is logged a careful inventory follows of each 'coupe' (area to be felled), plotting the positions of trees over a particular diameter. All trees that have a marketable value are plotted, but not all are felled. Subsequent decisions are made as to which trees to fell, and when felling begins the area around each tree is examined to find the optimum direction of tree fall, to cause the least damage to surrounding trees. Finally when the tree is extracted this is done by 'skidding' the prepared tree trunk to a nearby track (or in the early days to a narrow gauge railway especially laid for the purpose) and loading it up onto transport using block and tackle.

After construction of logging tracks, the most damaging part of the procedure is the skidding. Left behind after extraction is a large clearing composed of deep mud and littered with discarded branches and stumps. Damage extends back towards the track, small trees being broken or spared according to chance. However, if care is taken it is damage from which, with time, the area will recover. Indeed, the replanting and regenerating of mahoganies and other valuable timber species such as *Chlorophora (Milicia)* was a regular part of forest management over large areas of the forest from the 1930s to about 1954. It stopped then due to shortage of labour, damage by insects and large mammals to the planted trees, and growing confidence in the adequacy of natural regeneration.

As an example of forest management in Budongo, in January 1948, H.R. Webb of the Forest Department updated readers of the East African Agricultural Journal on a new, improved method of planting the mahogany, *Khaya anthotheca* and other valuable timbers such as *Entandrophragma*, *Chlorophora*, *Lovoa*, *Mildbraedioidendron* and *Albizia*. The detailed description of root pruning, ramming, lifting to check root development, experiments on shade tolerance, opening up of canopy to provide light, and experimental tree spacing and species mixing give a good idea of the seriousness with which forestry was being conducted during this period.

There were also some worrying aspects of forestry policy. When my wife and I studied wild chimpanzees in Budongo in 1962, we found a tree poisoning programme in operation. Poisoning started as early as 1952 in Uganda and continued throughout the 1960s. The active ingredients, 2, 4-D and 2, 4, 5-T act as plant hormones preventing normal growth in woody plants, and were applied in Uganda to the base of selected trees in solution in diesel oil. This arboricide was called Finopal, made in Britain by Unicrop. Trees were selected for poisoning on the basis that they were of so-called 'weed' species, that is species of no timber usefulness, or actual competitors with the mahoganies etc. We found, in 1962, that the favourite food species of the chimpanzees, the fig species, *Ficus mucuso*, was being poisoned and we later wrote to the Forest Department about it. I recall drafting the letter with help from the late Colyear Dawkins, who was strongly in favour of leaving at least one large *F.mucuso* tree untouched in every acre of forest for the chimpanzees. I did not know it then, but he was

Map of Uganda showing the Budongo Forest and the other forests in the west and south-west of the country.



studies of several thousand trees will shed further light on how logging has affected forest structure in Budongo. In the case of chimps, it will be long before we can estimate the current population as they are very difficult to census; it seems likely, however, that there are no more than a few hundred of them in the whole forest, a third or a half of the number 30 years ago.

I met Christopher Bakuneeta M.Sc. on my first return visit to Uganda in 1990 and he immediately expressed an interest in studying the chimpanzees. With the help of a number of field assistants he now works on the chimpanzee community that lives closest to the project headquarters at the Sonso Mill. He and his assistants regularly collect dung samples from the chimps and analyse them for their seed content. Seeds are identified and we are building up a picture of the chimpanzees role in seed dispersal. Chimps move over long distances and thus can play a large part in assisting certain trees such as *Cordia millennii* to propagate themselves. Several of these trees are useful timber species and thus the chimpanzees activities are of interest to foresters. Together with his field assistants, Christopher has succeeded in habituating twenty one chimps in the sawmill area and we are beginning detailed studies of these named individuals. Sadly, seven of the twenty one have received severe injuries, now healed, to a hand or a foot, the outcome of being caught in snares set for antelopes. Many more must have died in this way. Recently, Christopher's work was supplemented when a veterinary student, Gladys Kalema, did a study of the parasitology of chimpanzee faeces, identifying two varieties of nematodes, *Strongyloides* and *Oesophagostomum*. New studies by students from Makerere University include analysis of the correlation between soil structure and forest

type and studies of small mammals and birds. The ecology of blue monkeys is being studied by a student from Edinburgh University.

A team of Ugandan field assistants has been trained to go into the forest every day, armed with checksheets and binoculars, to provide data for primate surveys and tree phenology (the times of flowering and fruiting). Local staff have also been recruited to cut a network of pathways (known as transects) forming a N-S-E-W grid around the project site, for the purposes of gathering quantitative information. These same men are now employed to keep the transects open, since rather like cleaning the windows of a large building, as soon as they finish clearing the 200 kilometre network nature forces them to start again.

The information derived from these studies will help the Forest Department to draw up future management

plans for the forest. There is a second benefit: the presence of project personnel in the forest drives away chimpanzee poachers. The issue of chimpanzee poaching helps put Budongo into a wider context. In 1940 the British forester Eggeling could write: 'By far the greater part of the savannahs surrounding Budongo are uninhabited and human settlements are seldom found in its proximity.' This was still largely true in 1962 when I first visited the forest. Today things are different, however. What was once unoccupied grassland is now quite densely populated by the local Bunyoro people, or, more often, by immigrants displaced from their homelands in the north of the country by civil war or the desire to find work. There is also a large population of refugees from Zaire, dating from the civil wars which have continued from the 1960s to the present time. There is also a smaller population of Sudanese refugees. People have arrived, and continue to arrive, in their thousands.

THE COMBINATION of mass immigration and civil turmoil during the 1970s and 80s has led to human occupation of the grasslands surrounding the forest, with increased pressure on forest resources, and consequently their misuse. Pitsawing, the local logging technique whereby trees are felled and cut into planks over a pit, has damaged the forest in patches by systematic removal of all the largest and most precious trees. The technique is actually less destructive than mechanised extraction, but it is hard to keep under control since many separate trees are being felled in different locations at the same time. Trees are also burnt wastefully to produce charcoal, and there has been heavy poaching of wildlife for meat and the wildlife trade.

The Budongo Forest Project is contributing to an understanding of all these processes. In 1991 an anthropology student Ms Kirstin Johnson made a study of the use of minor forest products by the local people who now live around Budongo. She found a wide variety of uses of plants for medicines, food, for use in building and as fuel, while a wide variety of animals was hunted for food. In 1992 an anthropologist, Dr Kate Hill, made a study of crop raiding by forest animals on the farms that nowadays come up to the forest edge. She found that baboons and pigs were the two worst pests, and that they preferred maize to other kinds of produce while they hardly ever touched yams.

Further south, in Kibale Forest, there was extensive clear felling of forest for farmland during the Idi Amin years. This is an ever-present danger for Budongo, and the need for strong management and clear boundaries is greater than it ever has been.

A sense of perspective is useful here. The local people have always been entitled to take firewood and building poles from the forest to satisfy their immediate needs. People in addition make use of a variety of forest products for medicines, mats, roofing etc. Such activities cannot and should not be stopped, and in any case the forest can support them. But problems do arise in the case of hunting, charcoal making, illegal pitsawing and clear felling for farmland. It remains to be seen how well these problems can be tackled in the years to come. ☉

FACTS ABOUT BUDONGO

Type: Moist semi-deciduous tropical rain forest.

Location: at the northern end of the eastern scarp of the Lake Albert rift, between 1°35' and 1°55'N and between 31°18' and 31°42'E.

Elevation: 3,000 - 3,900 feet (914 - 1189 metres).

Topography: gently undulating with an easy NNW slope to the edge of the scarp; a few hills, the highest rising to 3894 feet (1189 metres).

Rivers: two, the Sonso and Waisoke, both small, draining into Lake Albert.

Area: 168 sq miles, 435 square kilometres (including Siba, which is 32 sq.m).

Average rainfall: 65" - 70" p.a.

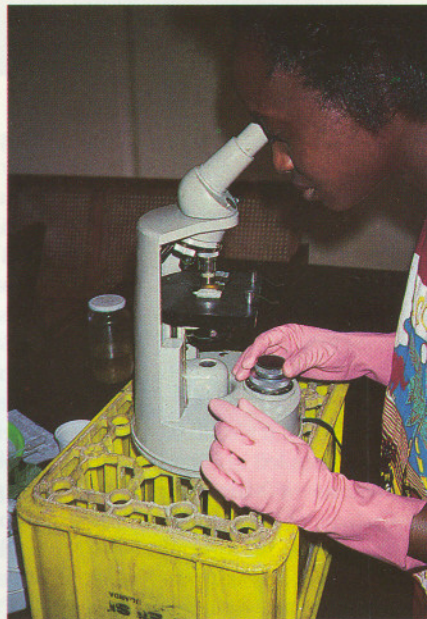
Wet seasons: April-May and Sept-Oct, dry season mid December-mid February.

Main forest types: *Cynometra* forest (climax climax), mixed forest, woodland forest, colonising forest, swamp forest (Eggeling 1947).

Nature Reserves: Nyakafunjo, never logged, and Waibira from which only the most valuable timber has been removed.

Main colonising tree: *Maesopsis eminii*. Climax tree species: *Cynometra alexandrii*.

Mahogany species: one *Khaya* and three *Entandrophragma*.

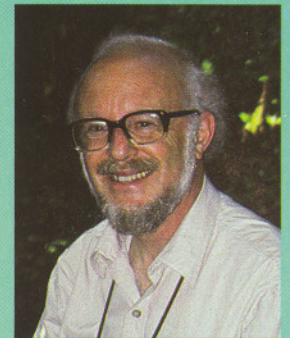


Above left: Forest trail in Budongo.
Above: Chimpanzee and young feeding on figs at Budongo.
Far left: Budongo trees marked for phenology and census work.

Immediate left: Gladys Kalema studying chimpanzee faecal parasites at Budongo.

Below: The market at Karongo on the edge of the Budongo Forest demonstrates the growth of the local population in recent years.

THE AUTHOR



Dr Vernon Reynolds was born in 1935 and first visited Uganda in 1962 when he and his wife Frankie studied the chimpanzees in the Budongo Forest. He has taught Anthropology at the University of Oxford since 1972. He returned to take up the study of the Budongo Forest and wildlife in 1990. The study is mainly supported by ODA, USAID, the National Geographical Society and the Jane Goodall Institute.



DAVE RICHARDS

Crowned crane, Uganda's national bird.

UGANDA

Alive and well

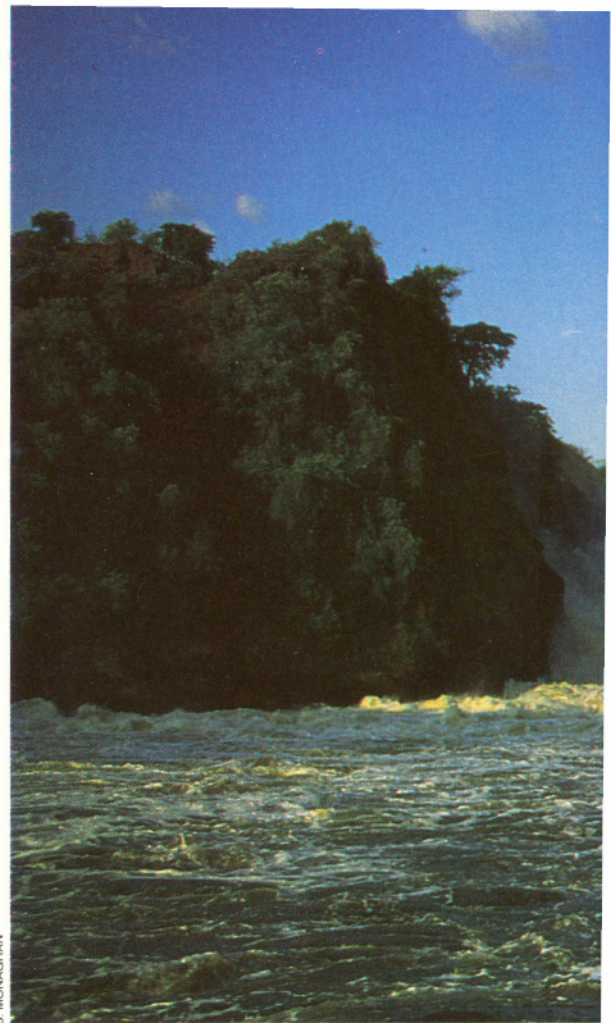
by Richard Vigne

'Uganda needs recognition from the international travelling public as she continues her long haul back to her original grandeur and prosperity.'

UGANDA HAS LONG BEEN DESCRIBED AS possibly the most beautiful of all African countries. Long forgotten by the international travelling public and ravaged by years of war, the country remains intact. Peace has been fully restored by the government of President Yoweri Museveni and reconstruction of the infrastructure continues apace. The common assumption held by most outsiders is that the country's wildlife populations - once some of the largest in Africa - are no longer. Certainly during the years of unrest great numbers of animals were wantonly slaughtered, but a great deal remains. Having now spent a year mostly within the national parks of Uganda I am in a very good position to have an accurate idea of what game remains and indeed in what numbers.

Of course, as is the case with most sub-Saharan Africa, the elephant and rhino populations are a mere fragment of what they used to be. It would be true to say that there are now no rhinos left in Uganda. The once famed elephant herds of Murchison Falls National Park have been dramatically reduced. However, in June 1992 we sighted a herd of approximately 400 individuals on the north bank of the Victoria Nile and I personally have never failed to see elephants on visits to the Falls. Individual sightings indicate that the ratio of young adults is high, which may in turn indicate that the adults remaining are breeding at a high rate. Provided that the security of the parks continues to improve, and (as I think most would hope) the trade in ivory remains banned, the future recovery of the elephant populations will remain assured. None is under any illusion as to how long this process is likely to take, but the future at least is bright.

Questionable is how effective the anti-poaching operations will be if once again the elephant becomes the major target of



S. MONAGHAN

illegal hunting. Ranger forces remain ill-equipped and although considerable steps are very slowly being taken to rectify the present situation, the instigation of firm management and adequate training will take a great deal longer. From my own observations I would suggest that should there be a resurgence in the ivory market in the near future, and as a result the value of ivory increases, then the elephant in Uganda would be eliminated almost overnight. The onus, therefore, is on the international community to ensure that this is not allowed to happen.

Apart from Murchison Falls National Park, elephants still occur in large numbers in Kidepo Valley National Park in North Eastern Uganda where herds of up to 200 have recently been reported. In Queen Elizabeth National Park they occur but to a slightly lesser extent. They are often seen, however, from the launch that plies the Kazinga Channel - occasionally almost completely submerged as they shelter from the heat of the day.

The launch trips are a major attraction of both Queen Elizabeth National Park and Murchison Falls National Park - in the former along the channel that connects Lake George with Lake Edward; and in the latter from Paraa up the Nile to the base of the mighty Falls themselves. Both prove immensely rewarding and a great variety of game can be seen. For those interested in birdlife few areas can compete with these. Along the Nile the rare shoebill (or whale-headed) stork is often seen - an estimated four individuals are resident in this area. Other notable species include openbill stork, saddlebill stork, spoonbill stork, Abdim's stork, vast flocks of

Below: Mountain gorilla. Uganda is the foremost refuge of this highly endangered species, possessing more mountain gorillas than Rwanda or Zaïre.



RICK EDWARDS



S. MONAGHAN

African skimmer, osprey, various bee-eaters (a species not found in Kenya or Tanzania), knob-billed duck, spurwing goose and white-collared pratincoles on the rocks in the vicinity of the Falls.

As one slowly winds up-river towards the Falls, large herds of hippopotamus take little notice, very occasionally baring their teeth in threat display, but otherwise allowing the launch to approach very closely. From November to March enormous numbers of (often gigantic) crocodiles are seen guarding their eggs along the shores of the river. Unwilling to leave their nests unless provoked, these giant reptiles offer magnificent photographic opportunities.

Nowhere in East Africa can one see such concentrations of this often despised, but nevertheless fascinating creature. Feeding mainly on the vast quantities of fish that inhabit this part of the river, one is quite likely to surprise elephant or buffalo, and reedbucks are often seen. The flow of water gradually quickens as the launch approaches the Falls. The river narrows, forcing the coxswain to accelerate until the boat is swung by the current around a rocky headland and into full view of the Falls themselves. They remain a magnificent sight as the Nile cascades through a seven metre gap into the tumultuous, boiling cauldron below. This is an area untouched by man and is terrifying in its power. Happily, plans to build a hydroelectric power station on the Falls have been vetoed and plans now exist to declare the area a World Heritage Site.

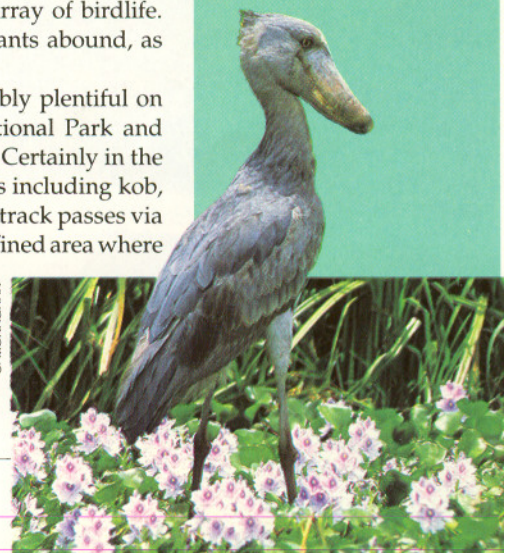
Returning downstream, animals tend to become more prolific as the sun begins to set and the heat of the day abates. Large herds of waterbucks and

buffalo make their way slowly down to the water; Rothschild's giraffe stare intently as the launch slips silently past and lions, now beginning to stir, are regularly sighted, curious, but rarely frightened.

Launch trips along the Kazinga Channel, although somewhat less spectacular, also offer superb opportunities for the viewing at close quarters of the large mammals and a wonderful array of birdlife. Pelicans and white-necked cormorants abound, as do many species of heron.

Animals in general are reasonably plentiful on the plains of Queen Elizabeth National Park and include large herds of Uganda kob. Certainly in the Kasenyi area 'plains game' abounds including kob, buffalo, warthog and elephant. The track passes via the kob mating grounds - a very defined area where the males of the species defend their individual territories (of which there are about 20); whereupon females pass through and choose males for mating. Normally those males which are able to defend

Top: Murchison Falls. Immediately above: Elephant seen from launch on the Kazinga Channel. Below: Shoebill stork at Murchison Falls N.P. Bird watching is excellent in all the parks.



S. MONAGHAN

territories closest to the centre of the mating grounds are most favoured. The fights that ensue as the bucks compete for territories are often spectacular. Predators are commonplace in this section of the park - lion, leopard and hyena are often seen.

Possibly the most attractive area of Queen Elizabeth National Park are the plains of Ishasha to the south. Famous for its tree climbing lions, this remarkably unspoilt area is reminiscent to a large extent of the Masai Mara in neighbouring Kenya. At certain times of the year the amount of game here makes an awesome spectacle. Herds of buffalo 400 strong are commonplace; lions, lounging in the fig trees they so favour are normally seen; and chimpanzees, living along the forested margins of the Ishasha river are heard often and seen occasionally. The main attraction, however, is the complete absence of the so called 'minibus brigade'. Inevitably this will change as Uganda continues to open up but, for the moment, few places remain on the continent where one can be so totally alone in such a remarkably

beautiful area. In particular, I remember one early morning drive along the river onto the Lake Edward flats. In the space of two hours we saw elephant, giant forest hog, hyena, two prides of lion, waterbuck, the ubiquitous kob, topi, bushbuck and on arrival back into camp, chimpanzees. Who says there is no game left in Uganda?

Other areas of Queen Elizabeth National Park that hold a great deal of interest for visitors are the magnificently scenic crater area and Lake Katwe, where traditional salt production is still carried out. The Hamukungu fishing village on the shores of Lake George provides a base from which to explore the surrounding swamps - the shoebill stork occurs here and birdwatching is excellent, particularly during the migrations.

Of course, Uganda has a lot more to offer than the classical East African-type game parks, interesting though they are. Large areas of the country are still forested, although, sadly, rapid deforestation continues in some areas. In many of these forests are found a very large variety of primates. Of major interest to many at the moment is the Mountain Gorilla project in

Bwindi Forest in south western Uganda. These primates are undergoing habituation and are expected to be ready for tourism by April 1993. Few people realise that Uganda is the foremost refuge of this highly endangered species and actually possesses more mountain gorillas than either Rwanda or Zaire. The Bwindi Forest itself has recently been gazetted as a national park and is an area of outstanding natural beauty. Otherwise known as the Impenetrable Forest, this name is particularly apt. As one drives through, miles of incredibly steep, densely forested hills stretch as far as the eye can see and it quickly becomes clear just how thick the vegetation is. It would be difficult to make one's way through it without the benefit of the numerous animals' trails which criss-cross the area.

Apart from Bwindi, the other major forest area that is also being 'developed' for tourism is the Kibale Forest Reserve near Fort Portal in western Uganda. Nine species of primate are to be found in this forest including chimpanzees. Here also habituation is being carried out and one has a good chance of seeing the chimpanzees. Other animals that are also occasionally seen are bush pig, duiker and forest elephant. In addition to Kibale, chimpanzees are at present being habituated in the Chambura Gorge to the north of Queen Elizabeth National Park and there are plans to begin habituation in the Kalinzu Forest to the east of the park.

With its wealth of natural attractions, Uganda has a great deal to offer - especially to those who are looking for something slightly different. Uganda represents a meeting place for East and West African wildlife, including such species as zebra, ostrich, impala and in Kidepo, cheetah. As one progresses further west, especially towards the forests of western Uganda, the composition of species begins to change - birds such as red-throated and black bee-eaters appear and those species characteristic of the West African rain forests, such as chimpanzees and numerous other primate species, begin to be found. At the same time East African species begin to disappear. Close examination of any relevant literature will reveal exactly to what extent this occurs - it is true also for plants, butterflies, reptiles and insects, and leads to a massive variety of flora and fauna.

As roads and major access routes within Uganda continue to be improved, these areas will become more and more accessible. A lack of sufficient funds is making the works of the parks' authorities extremely difficult; only a very small number of visitors come to the parks each year - the reasons are generally recognised to be that Uganda is still perceived to be unsafe and with little to offer. Both reasons no longer apply. As has been illustrated above, Uganda still possesses a wealth of wildlife. The scenery is every bit as awe-inspiring as it has been described - I have not even mentioned the Rwenzori mountain ranges to the west. But above all, Uganda is a safe place to visit. More than anything now, Uganda needs recognition from the international travelling public as she continues her long haul back to her original grandeur and prosperity.

Below: Famous tree climbing lion of Ishasha; White pelicans at the Kazinga Channel; Crocodile seen from launch; Tourists on the launch.



To hunt or not to hunt

by Imre Loeffler

THIS IS THE FULL ARTICLE FROM WHICH A PREVIOUS 'CALL OF THE WILD' ESSAY (JAN/FEB 1993) WAS CONDENSED.

Just before dinner the trackers reported that they had come upon tracks of a large leopard. Alberto had very much wanted a leopard. He said that he would have been happy not to have shot anything else during his three weeks, if he got a leopard.

BUT FIRST BAIT WAS NEEDED. LEOPARDS ARE, REPUTEDLY, fond of the oily meat of ostrich. So in the morning we went to shoot bait. The sun had just risen. The francolins and the doves were calling. Some of the acacia were in flower: fluffy white and yellow jewellery covered the bushes and trees. Giraffes were lingering in a park-like grove. The buffalo and the zebra were drifting away from the river. We came upon a clearing. At the far end a group of ostrich were grazing. We counted two males and seven females. Further on stood a single male, preening. The hunter and Alberto, together with two gun bearers, alighted. I saw them disappearing between the trees. A pair of go-away birds gave alarm but only a group of buffalo took the warning seriously. They strutted out of the trees, nose held up in the air, ears shaking and stopped next to the car.

The ostrich continued preening. He had no pink on neck or thigh. There he stood, several hundred dollars worth, destined to be hoisted into a tree and served as leopard bait.

It was still early morning yet the tsetse started to bite. The driver sprayed and sprayed, fumes of the insect killer filled the car. I got out. The buffalo trotted off. I sat on an anthill. There was no sight of the bait hunters. The ostrich was laying on the ground powdering itself.

The ostrich stood up. He stretched his neck and turned his head so as to listen to the wood once with the right ear and then the left. He shook his head and started to pick on the grass.

Then I remembered another bird execution. I sat one early morning in front of my tent looking at a spur fowl that stood on the top of the termite hill greeting Aurora with its guttural cry. The spur fowl had turned towards the crimson line on the horizon. I could see movement in the bush behind the bird. A sleek shape was advancing there towards the anthill. As the light increased, I recognized the spots. It was a serval. The spur fowl was stretching its neck jubilating a new day. Now the serval was at the foot of the anthill. Maybe it made a noise, maybe fowls can smell cats, the bird turned, saw the hunter just when it jumped. The bird, shrieking, launched itself into the air. The serval touched the top for the anthill with his hind feet, recoiled, stretched itself vertically and pawed the bird out of the air. Feathers flew. The bird fell and the cat grabbed it and ran off.

The clearing lay still. I saw a group of kongoni emerging from the forest. The ostrich was feeding. I kept thinking of the ostrich farms. I wondered how they kill the birds. Do they stun them with current and then cut their necks like grandmother used to do to the chicken?

The ostrich froze. A small herd of Thomson's gazelles bounded off. Just then I saw the glimmer of metal behind a tree. The ostrich must have seen it as well. It careened around, took a big leap, opened its wings for balance and then I saw it fall before I heard

the gun. The kongoni had the hunting party in full view now, the four men walking towards the spot where the ostrich lay. The hunter notioned to her car. The driver busied himself on the radio. We got into the car and drove back for breakfast. The bait crew would fetch the cadaver. Alberto did want the skin and few feathers but he declined to take home the feet.

Our camp was a countryside akin to the one in the Hemingway story: 'The short happy life of Francis Macomber'. I came here to see how professional big game hunting is done. I came with a number of strongly held views. My dislike of hunters is deep seated. I have often thought that people who kill for pleasure would be well advised to see a psychoanalyst. My apprehension about the motive of the hunter made me condemn hunting altogether.

I did sense that many of the cooperative traits of homo such as they are may have evolved in pursuit of meat, a pursuit implicitly commended in the covenant with Noah.

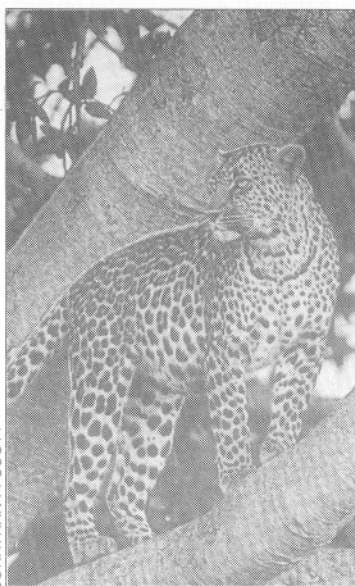
Lately I came to realize how anthropocentric and anthropomorphic conservation policies are. I knew how sentimentality distorts the debate about hunting. I thought one could re-examine the issue without reference to the motives of the hunting, see what sport hunting does to the species. Hunting or no hunting all leopards will die. Apart from disease, the natural history of an old male leopard is that it either starves or that it is harassed and killed by another leopard - sometimes hyena or lion. Now I hear people saying to me all the time how they would prefer to die: quickly, unexpectedly, painlessly. Well, that is the kind of death a clean shot brings. Sentimentality ought to be applied both ways: let old male leopards die quickly and without pain like men often die whilst old female leopards are left to nature, like most old ladies die of

cancer or degenerative diseases... not surprisingly, ladies dominate the euthanasia debate.

Think biology: - I said to myself - forget individuals. Think ecology, think of land use, of economy, think of the failures of pristine attempts at conservation and of the decline of national parks. And remember European history: where it not for the hunters there would be no stag, no boar, no hare left in Hungary. A couple hundred big stags are killed every year and for the sake of those populations many thousands roam about happily, their habitat is protected and often they are even fed! By extension, the possibly abominable desires of the hunters maintain species communities which otherwise would have disappeared. This is conservation directed by market forces. Of course, in order to be sustainable it needs to be monitored, controlled and policed. Moreover, its economic benefits need to be self evident to the people who compete for the resources be it land, water, minerals, trees or the game itself.

So the dislike for killing of a large, beautiful fellow vertebrate should not skew the debate on hunting. The question should be: does big game hunting contribute to conservation of habitat and to the survival of species?

In the afternoon we went to put up the bait. The ostrich had been plucked and skinned. It was cut in two halves in the sagittal plane. The first half we took to a nearby kopje located within the sanctuary, where there is a permanent hide and a usually obliging leopard to delight the photographers.



JONATHAN P. SCOTT

We drove on to the rivulet where the trackers claimed to have come upon tracks of a monstrous leopard. We found the tracks, now sheltered by twigs put by the trackers over them. Although I have never hunted, I have followed game tracks often enough: there was no doubt, this leopard was a big one. It took us about two hours to find a suitable tree, a suitable place where the hide could be built and to hoist the half ostrich up into a distal fork of a flimsy looking branch, to secure it, to make it vulture proof and whilst we did all this the entrails of the ostrich were dragged around the bait tree in a large circle and then back to the tree - offal as appetizer.

By the time we reached the camp it was night. At dinner conversation drifted about then settled on art, on paintings. Alberto is a collector of paintings, more importantly he is a connoisseur, an admirer of beauty in many of its manifestations. His motives for hunting are complex, probably more complex than he could realize: adventure, excitement, gamble, admiration, atmosphere, the collecting compulsion, but then he is also a killer, a terminator of vibrant life ...

I thought of the Covenant of Genesis (9:2), 'and the fear of you and the dread of you shall be upon every beast of the earth and upon every fowl of the air, upon all that moveth upon the earth and upon all the fish of the sea, into your hand are they delivered. Every moving thing that liveth shall be meat for you ...' written at a time when the hunter-gatherer was about to enter the agricultural revolution, when he domesticated and husbanded fowl and stock, fed them and fattened them, wrote poems to them and about them, deified them and then slaughtered them for his sustenance and utility. Countless billions of animals have existed only because man wanted them to exist so that he can consume them.

Altogether in the whole concession area eight leopard baits have been put. Now we had to examine the baits and see whether any were visited by a leopard. Only after there was evidence that a leopard was interested in a particular bait would a hide be built and perhaps on that evening or next morning the riflemen would occupy the hide. The leopard is likely to return to the bait... Of course not only the males would do so. The lucky females have free meals, expensive meals and the satisfaction that the host is likely to sit in the hide shaking his head.

ALBERTO AND THE HUNTER went to look at the bait set for the biggest leopard, I went off with the bait car on a long journey to check on other baits. There was game everywhere in great abundance, game obviously not harassed by poachers. Poaching was sporadic now. The breakthrough in curbing the poaching (after the last rhino had disappeared and the elephant had been decimated) was not solely a matter of better 'Anti-poaching control' - it required a new approach to the problem, an approach which would always have been the only sensible one: the involvement of the community, of the surrounding villages in the utilization of the resource in their neighbourhood, for it is their resource. Colonial governments and the governments of the newly independent countries failed to see the importance of this. They went further: they posted to any given area game scouts and rangers hailing from distant places and regarded much of the anti-poaching operation as law enforcement, as a police job.

The villagers need protein, so the most important step is to agree on a quota that they are allowed to hunt or that will be hunted for them. Then the communities in the neighbourhood must benefit directly and indirectly from the hunting cum conservation activity: they must get a proportion of the revenue and they must get the major proportion of the jobs.

Equally important is education. The concessionaire is well advised to take part in this education by - for instance - inviting the villagers, particularly children, on conducted tours and let the trackers and gun bearers - most first class naturalists -

explain the ways of the bush.

So, do I suggest that huge tracts of Africa be set aside as playground for a few hundred bloodthirsty millionaires? Well, we often discuss mass tourism that has destroyed our most outstanding national parks. We keep asserting that mass tourism must stop, that no more lodges should be built, that licences for camps should be restricted, that access to some parks be limited. We also say: stop off track driving, police game drive traffic, stop balloons, penalize littering and arrest trespassers ... Alberto, during the week he spent in this one camp, has provided more income to the regional and central revenue collectors than many bus loads of tourists and has not damaged a tree, has not caused erosion, did not litter and, as he was walking a lot, did not cause much pollution either.

I WAS OCCUPIED with these thoughts whilst we drove from baited tree to baited tree. We visited five sites ... Some of them were baited with baboon carcass (the fee, naturally, charged to Alberto) others with zebra or antelope remains. None of them had been touched by leopard in the previous 24 - 36 hours. So baiting is obviously not like a fly trap.

The hunter and Alberto were in the camp when I returned. The bait meant for the big leopard had been taken by lions! When we hoisted the half ostrich up into the tree, I did not believe that the branch would be strong enough to take the weight of the bait alone, save that of a leopard. Yet lions climbed the tree, tore all the securing ropes, freed the bait and took it away ...

Hunting is an arduous undertaking. Hunting according to sportsman's rules, 'ethical' hunting, is a demanding pass-time.


Can the rules be enforced? Can it be safe guarded that the yield is sustainable? If cheating and over-exploitation cannot be prevented altogether, can it be minimized? Could such be accomplished in a country like Kenya?

I believe the answer to all these questions is yes but there must be a number of provisos. One proviso is the participation of the local community and their involvement in anti-poaching and law enforcement. The other is peer control among the professional hunters. These measures together with ecological monitoring, sensible fee structure, and a guarantee for long term concessions will safeguard everyone's interests, not least the leopards!

It was full moon. I lay on my bed. I was to leave next morning so that I would not know whether Alberto got his leopard. I dislike hunters less since I met Alberto and since I have partaken in the periphery of the sport. Still I do not think that anyone could turn me into a hunter, a hunter for the killings' sake, for the trophy's sake.

I decided to write an essay on the topic and to suggest that controlled hunting would be beneficial to the very species hunted, to the habitat and to the people in the vicinity of that environment. I also think that the disappearance of the hunting areas which have surrounded most national parks have created the confrontation between the national parks and the villages and at the same time the expansion of human habitation into these areas has in most cases not provided as much revenue as hunting had or could have. Then I went further in my thoughts: if I had the responsibility to choose between mass tourism and hunting I would choose the latter without hesitation ... I resolved to propose that big game hunting can make good sense in terms of conservation, community and economic development.

I lay there thinking. A lion called. The call came from nearer and nearer and then the lion was in the camp. I remembered what one of the trackers told me the day before, that if a client shoots a lion, its siblings often prowl about in the camp for days attracted by the scent of the slain fellow's skin.

I realised what Virgil may have had in mind when he said that the tears shed by things remind one of mortality. 

SOCIETY *highlights*

The Corporate Certificate Award Ceremony

IN THE OVER 37 YEARS of its existence the East African Wildlife Society has come to be recognised internationally as a leading conservation organization in East Africa. This has been made possible by the material and moral support the Society has continued to receive from members through the years.

Presently the Society has over 10,000 members out of which 250 are Corporate Members. The latter category, which comprises mainly of NGOs, companies and parastatals, was recently singled out for its special role in wildlife conservation during a ceremony held in its honour on the 19 May 1993 at the Auditorium of the National Museums of Kenya.

It is worth noting that in the last five years alone, when corporate membership has increased by 58 per cent, the Society has been able to initiate more than 200 conservation projects in the same period. The Corporate Certificate Award Ceremony was therefore a special occasion held in recognition of this substantial support and goodwill shown by the Corporate Members.

Despite its short notice, many corporate members including some from overseas were able to attend the function. Notable among them was Mr Gilbert Zalmar, representative of Safari World - New York, who have been instrumental in enrolling many of their clients into our organization. The guests included members of the Council, the Management Committee and the Scientific and Technical Committee.

The guest of honour was Dr Theuri Njoka, the Chairman of the Society, who in his speech thanked members for their role and commitment in caring for the environment. Dr Njoka presented each member with a Corporate Membership Certificate.

An additional certificate, the Conservation Award Certificate, was then presented to those who have been outstanding in their services to the Society.

We wish to take this opportunity to thank all those who were able to attend this occasion, and we also want to assure those unable to attend that their certificates were mailed to them.

The Society is grateful to all its members for their continued commitment to wildlife conservation and looks forward to many more years of their support.

Diana Sigei




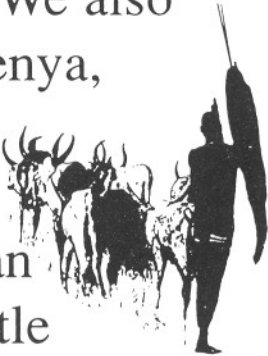
Representatives of Corporate Members from all over the world posing with their certificates.




TROPICAL ICE

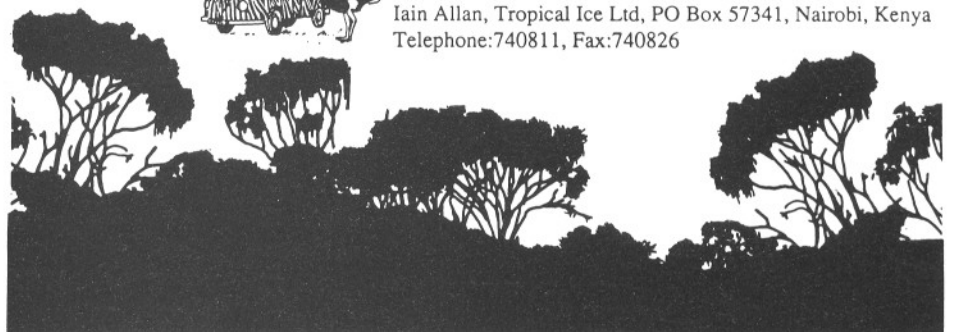
East Africa's original adventure safari company, specializes in discovering new trails through unspoiled wildernesses,

where you will only see  game animals and nomadic people. We also lead expeditions up Mount Kenya, through scenery you'd never have imagined existed.

 If your idea of an African Safari is something a little

more stylish and adventurous than the average  package tour, contact us:

Iain Allan, Tropical Ice Ltd, PO Box 57341, Nairobi, Kenya
Telephone: 740811, Fax: 740826



SOCIETY highlights

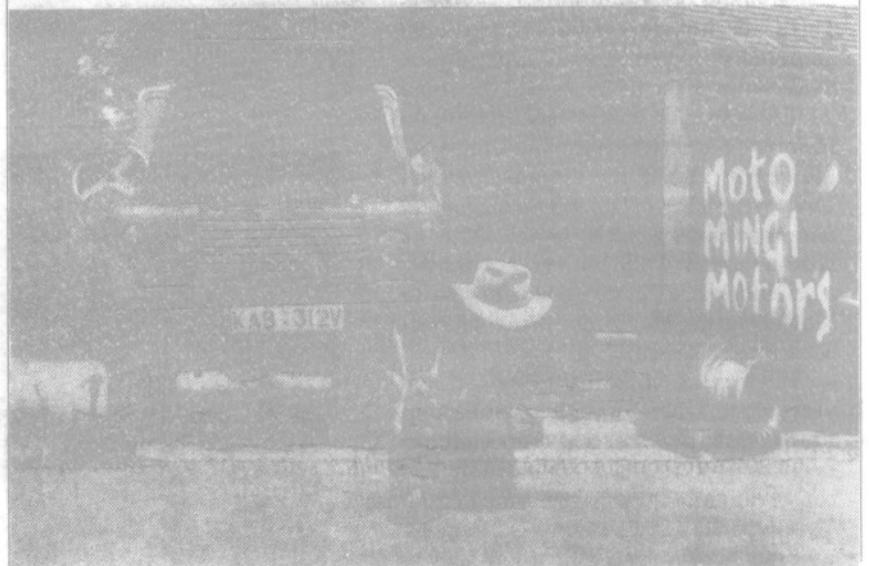
Conservation Fund

DURING THE LAST FEW MONTHS, the East African Wildlife Society has received donations of over Ksh 800,000 to its Conservation Fund. We are extremely grateful to everyone and in particular to:

Douglas Aja	E. A. Keegan (Mr)
S. Allen	A. Kitroeff
P. R. Bannister	Maryanne Krech
J. K. Beard	John B. Lake
G. S. Bedgood	D. Lawning
Joan S. Bortnick	Comtesse Leutrec
M. W. Bowie	R. Longbottom (Mrs)
George Bunting (Mrs)	R. C. & C. A. Mabey
G. Calder (Mr)	Makki International
J. T. Carpenter	Academy
J. T. Cederholm (Mr)	Major (Dr & Mrs)
Kate Challman	Adrian McCracken (Dr)
James Conley (Mrs)	John & Margaret McElroy
N. D' Anjou	N. Moore
Davidson (Mr & Mrs)	J. Moran (Mrs)
D. De Paolt	Nairobi Safari Club
Larry De Ssenpreis (Mr & Mrs)	Mary Neil
Denkla (Mr & Mrs)	Packer C. & Pusey A. E.
Charles Dobbs (Mr & Mrs)	Pellman Medora S &
Richard K. Dowse	Lawrence
J. C. Durano	W. J. Pfizenmayer
Pamela Dyke	George M. Prouf
R. A. Ergerton-Davis	A. Van Rees
D. Engleke	R. Rogerson (Mr)
Fauna & Flora Pres. Society	D. K. Rupp
M. B. Fitzpatrick (Mr)	Gary Rybin
W. L. Foxworth	Robert B. Saunders
C. F. Freihett	Charles & Norma Scott
M. P. Fuchs	Heinz-Peter Schononski
Tyler B. Gibbs	Ronald & Joan Segerlind
C. L. Gibsons (Mrs)	T. Serafini
Dr. W. Leuthold-Glinz	F. Sharples (Dr)
M. S. Haywood (Miss)	S. R. Smith
Jeanne Herbert	M. Merle-Smith
Hermion (Mr & Mrs)	Jane Stanley (Mrs)
D. J. Hibner (Mr & Mrs)	C. Sugimoto
A. S. Hooper	Jay Thamert
J. W. Hornor (Mrs)	Sorgen Therese
D. W. Jagoe	D. M. Tinkler
T. Jeffrey (Mr)	M. M. Urquhart
Charles & Louann Johnson	A. Visiola (Dr)
E. R. Jones	E. J. Wood
Mercedes G. Juarrero	Martin Wyler
M. Kass	J. Zenon
Fran Kane	

All the above gave generous donations of Ksh 1,000 and over. At the request of some of the donors, certain of these donations will be channelled to specific projects.

When the cowboys take you for a ride ...



... you'll never leave town!

Cowboys may know something about cows, even horses. Chances are they know more about four legged animals than you do. But four wheel drive cars are a breed apart. They demand their own professional qualified personnel to maintain them, not cowboys.

At Land Rover, our Service Department is geared up to help you get most out of your vehicle. Everyone of our service staff are Land Rover trained. Trained to look at every detail and leave nothing to chance. Trained to do a first rate job.

Our clean, modern workshops are fully equipped to help us maintain your vehicle's performance at its optimum level. And of course, we have the enormous resources of Land Rover Parts behind us. Which means access to 30,000 Genuine Land Rover Parts and an overnight delivery service so your vehicle will never be out of action for a moment longer than necessary.

Next time your Land Rover is due for some attention, don't be lassoed by the cowboys, bring it to us. At least we'll guarantee that you and your Land Rover will leave town in one piece!

Let the professionals service your Land Rover.

LAND ROVER KENYA

A Division of **LEYLAND** Motors Group Ltd

Lusaka Road • P.O. Box 30135 • Nairobi, Kenya
Tel: 554211 • Telex: 25507 • Fax: 543615



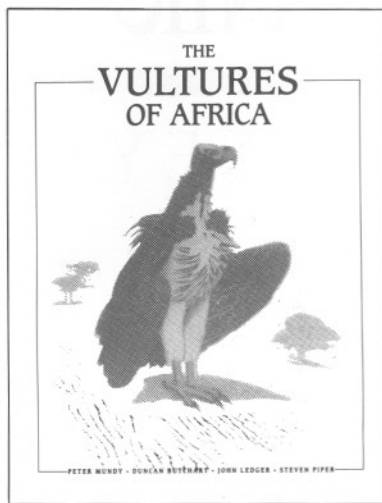
MOLYSLIP

Keep on Game Watching
without Engine Watching
Molyslip TAKES CARE!

2001 E & G for engine and transmission oil treatment

"Technical and Trade Enquiries":— Viking Limited, P. O. Box 10847 Nairobi, Tel: 444275/6 Fax: 449246

BOOK reviews



THE VULTURES OF AFRICA

by Peter Mundy, Duncan Butchart, John Ledger and Steven Piper

Published by Acorn Books and Russel Friedman Books in association with the Vulture Study Group. Price: Stg £ 55 ISBN 1-874802-03-3.

A CURSORY LOOK THROUGH THIS meaty volume reveals much more than gory photographs of scavenging birds. It has 464 pages, 130 photographs, 100 drawings, 11 paintings, 45 tables and numerous graphs and maps. At the back is a formidable list of references. Despite its attractive appearance, this is clearly no 'coffee table' volume. Yet despite tackling some weighty topics, the text remains interesting and enjoyable to read. Dr Peter Mundy and his colleagues have succeeded admirably in writing an authoritative yet accessible work.

The book begins with an overview of all the world's 22 species of vultures, including those of the New World. It then examines the physical attributes and adaptations of vultures that enable them to find and eat carrion, with particular attention paid to flight performance. The origin and evolution of the group is described, a particularly interesting story because of the relative wealth of fossil material. Then the focus shifts to Africa as a vulture locality: the continent houses 11 out of the 15 Old World species.

The African vultures are then dealt with one by one in a series of detailed accounts. Each is provided with a distribution map and a splendid painting by Duncan Butchart. The text covers in turn taxonomic history and nomenclature, identification (including full measurements and details of different plumages), distribution, behaviour, food and feeding, breeding and

conservation status. Each topic is covered very thoroughly, and a population estimate is bravely attempted for each species. The author makes a point of using 'raw data' and often quote the source rather than generalise. Quite correctly, they are critical of some of the less rigorously-collected data. Like fishermen, vulture workers seem prone to the occasional exaggeration.

Anecdotal accounts pepper the text, making a refreshing change from the indigestible mass of facts often encountered in comprehensive monographs. An example is the story of Francois Levaillant's extraordinary battle with a Lappet-faced vulture (the first known to science) in 1795, which is accompanied by an engraving of the event. Less effective are the frequent enthusiastic exclamations inserted in an apparent attempt to make vultures more interesting. This is unnecessary, since the information alone seduces the reader into accepting that these are truly important and magnificent creatures.

After the species account two chapters deal with behaviour and breeding. Kenya figures prominently in the discussion of breeding seasons. Here our vultures present numerous puzzles and this chapter will make interesting reading for local ornithologists.

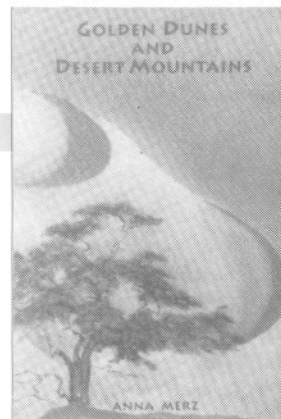
The remaining chapters address the human-vulture relationship, which has run the gamut from worship to extermination. The threats facing vultures are legion, including diminishing wildlife, mass poisoning, electrocution, collisions with man-made structures and disturbance of nest sites.

Perhaps of little interest to us in East Africa are the group photos and memoranda of the individuals involved in the Vulture study Group (VSG). These do, however, illustrate the remarkable amount that can be achieved by small group with a focus.

Although the perspective of the VSG is largely South African, the conservation strategies they have developed, and the conservation problems they face, are equally relevant here. One hopes this book will stimulate concern and action for vultures throughout Africa.

The book has its faults, notably a tedious tendency to repeat information in several different places. These are minor, however, compared to its achievement. This impressive book will undoubtedly be the compendium on African vultures for many years to come. Despite the high price tag it represents excellent value for anyone with an interest in these splendid creatures.

by Simon Thomsett



GOLDEN DUNES AND DESERT MOUNTAINS

by Anna Merz

Illustrated by Ann Bennett

Publisher: Ex Africa, P.O. Box 477, Nanyuki, Kenya.

THIS IS A TALE OF TRAVELS, MOST OF them in Africa. The author is intrepid and determined: these traits coupled with her sometimes disconcerting directness and total integrity, bring an unusual charm, almost a simplicity, to her story.

Anna Merz is more than happy to cast all creature comforts aside to get into places she yearns to explore. She will squelch through marshes, crawl on hands and knees, wade rivers, traverse the desert sands, or shiver through a chilly forest night to obtain a sight or sound of a wildlife rarity.

The greater part of her forays were undertaken during a sojourn in West Africa, where she was appointed an Honorary Warden with the Ghana Game Department. She woefully records (in the sixties) that the Ghana Parks system even then ran on something less than a shoestring, destruction of the forests was rampant, and poaching for 'bushmeat' was fast decimating the country's sparse wildlife. She was able to help influence the enactment of various bye-laws in wildlife protection, but was saddened to see the greater part of her recommendations fall by the wayside.

Her expeditions into the Sahara turned up the legendary Barbary sheep (or mouflon), dama and Dorcas gazelles, and of course the spellbinding scenery of the rolling dunes and dramatic granite massifs which are so typical and yet so eternally fascinating in that remote areas of wide sands.

The story is well worth reading; and particularly for her Kenyan acquaintances and colleagues, it will add to our understanding of what makes this unconventional, interesting lady 'tick'!

All proceeds from the sale of this book go towards the funding of the Ngare Seroi Rhino Sanctuary, the story of which is contained in the author's first book 'Rhino at the Brink of Extinction'.

by Fiona Alexander

Down the Albert Nile

AN AFRICAN JOURNEY

by Jake Reynolds

How has the old route of romance and adventure fared?

IN 1992 I TOOK A SMALL BOAT DOWN THE ALBERT Nile, beginning at Lake Albert in Uganda, and ending up near the border of Uganda with Sudan.

This route is interesting not only because it played a central role in the discovery of the source of the Nile, but because for many years it supported an important and unusual marine service in the heart of Africa, now sadly abandoned.

When the Victorian explorer Samuel Baker discovered, named and drank deeply from the waters of Lake Albert in 1864, an era of transport was begun on the upper reaches of the river Nile. Boats were steamed, rowed, and even carried in pieces upstream from Egypt and the Sudan, in an effort to bring the headwaters of the Nile under Egyptian rule. Swamps, rapids and attacks by the dervishes could not deter the boats. Colonel Gordon and Emin Pasha are two of the great names of African exploration who were involved in surveying, administrating and later defending the new territory of Equatoria, shared now between Uganda, Sudan and Zaire.

With the completion of the Uganda Railway in 1901, a firm link was established between Mombasa on the East African coast and the interior. Passengers arriving by ship could ride comfortably onward into the Uganda Protectorate, arriving at Lake Victoria, the source of the Nile. Winston Churchill

began his African Journey this way in 1907, continuing on to Lake Albert partly along the Nile and partly overland via Masindi. This overland route took him through the luxuriant Budongo Forest before descending the escarpment of the rift valley to the lake at Butiaba.

Before entering the Albert Nile at the north end of the lake, Churchill travelled back upstream to Murchison Falls where the entire river

boils through a gap narrow enough for an athlete to leap across. In the pool beneath the falls he was lucky to survive crocodiles when his boat was upset by a hippo. Later, as he returned to his northwards journey, he more characteristically gained the upper hand and brought down several white rhinos near the settlement of Hippo Camp. After tearing himself away from the fun at Hippo Camp he continued on to Khartoum, Cairo and home.

It is incredible that the wild and hazardous route pioneered by Churchill became a set piece of African tourism, but during the early 1930s Kenya and Uganda Railways and Harbours introduced a fortnightly passenger service from Mombasa to Sudan following the same route - even offering Churchill's epic excursion to Murchison Falls for those that wished. In typical colonial style, a 1936 travellers guide tells prospective Nile travellers that: 'On the way you can halt at Pakwach, Rhino Camp, and the little outposts of the Empire and make pleasant contacts with the handful of white men and women who are helping to forward the progress of hundreds and thousands of Africans still in the early stages of civilisation, despising clothes, most of them, and knowing little of the outside world. This is the land of the Mahdi, of romance and adventure, the last home of the white rhino, where the mystery of Africa is revealed in the moonlight glistening on brooding lands of promise, the real Africa robbed of its hostility and opened up to the wanderer by the power of modern transport and British Administration.' Who could resist when comfort was guaranteed in luxury train compartments and boat cabins in a way that is unlikely ever to be repeated?

The section between Butiaba and Sudan was conducted on two great passenger vessels. The 860 ton steamer, *Robert Coryndon*, took passengers along lake Albert to Pakwach which was as far as deep water permitted. It resembled a small ocean liner, since it was built with a sharp bow and deep draft to weather the often rough conditions in the lake. At Pakwach passengers transferred to the *Lugard* (and later the *Lugard II*), a shallow draft paddlesteamer which descended the river up to the border with Sudan. From here the Sudanese and Egyptian authorities took over responsibility for the journey to Cairo.

The service operated until Lake Albert rose

Author's journey from Masindi in Uganda to Laropi near the Sudanese border.





ANDY LANE

dramatically during 1962, flooding the port of Butiaba and doing much damage to the harbour and vessels. This event combined with rising competition from road and railway transport caused both passenger and cargo services to be abandoned. Now all that can be seen are rusting hulls and landing stages half submerged in papyrus swamp at intervals along the river. An exception are the two great passenger vessels, the *Robert Coryndon* and *Lugard II*, which still stand at their home ports of Butiaba and Pakwach, somehow resisting the overwhelming forces of nature.

Three decades after the flood I decided to follow the old route of the boats to find out how the land of romance and adventure had changed. The intention was to return to our base, Masindi, overland by bicycle and truck. As the region had only just emerged from 20 years of insecurity due to anti-government rebels, I set about obtaining permission well in advance and was granted documents in September 1992. I already knew of a wealthy trader living near Butiaba who took merchandise across Lake Albert to Zaire. He offered me the use of his 25 foot boat and outboard motor if I compensated him for lost revenue while it was away. He also promised to throw in a pilot and navigator which seemed like a good idea as I had heard that the river divided into a myriad of channels after Pakwach, many of which were impassable. I collected a supply of beans, rice and cooking oil in Masindi, plus jerry cans of petrol for the outboard motor, and off-the-shelf Indian-made bicycles for the return journey. The British photographer, Andy Hamilton Lane, came out to join me in early October, and I recruited a translator, Richard Odongtoo, to act as expedition interface with the outside world.

When the time came to leave at dawn on Sunday, 18 October 1992, the navigator, who was also a Catholic padre, said his last prayers on dry land and climbed into the boat. The whole village assembled on the shore to say good-bye. Characteristically, the outboard failed to start until the pilot



ANDY LANE

was about to drop.

We soon realised that ours must be one of the largest, if not *the* largest boat on the lake, a comforting thought as we passed our first hippo wallowing on a sandbank. What we didn't realise was that we would not see any more hippos along the entire 200 mile journey to the Sudanese border - and that includes the deserted settlement of Hippo Camp. The problem is that a hippo can provide up to a ton of meat. For centuries fishermen have speared the odd animal to supplement their diet, but the appearance during the 1970s and 80s of military groups poaching animals with automatic weapons, not spears, has altered the balance entirely.

Another thing we realised soon after departure was that our navigator had never seen the river before, which went some way to explaining why he spent so much time praying. The boat owner had only put him on board to keep the pilot company on the return journey, so we nick-named him 'The Passenger'. Worrying thoughts about being funneled into swamp north of Pakwach crept into our minds especially as we had left both of our machetes in Butiaba by mistake. That afternoon, after a peaceful cruise up Lake Albert overlooked by

Top: Sunset at Butiaba. Immediately above: Wreck of the *Robert Coryndon* near Butiaba.

Below: Looking for Laropi near the Sudanese border.



ANDY LANE



SPECIAL CAMPING SAFARIS



ADVENTURE

Enjoy the adventure of safari in the world-renowned gameparks of Kenya. We not only offer scheduled trips of four, six and ten day safaris which leave Nairobi on a Sunday/Monday and Wednesday, but we can also arrange individual safaris to suit your particular needs.

CAMPING

Experience the thrill of bush-life with our adventure camping safaris to Masai Mara, Lake Turkana, The Rift Valley, Mount Kenya, Samburu, Amboseli, Tsavo and Tanzania.

SPECIALS

We offer a wide variety of action trips including: Golfing, walking safaris, climbing Mount Kenya, horse riding, and fishing.

We can also organise family group safaris, schools, clubs and special interest safaris.



P.O. Box 51512
Nairobi, Kenya.
Tel: 338325/220072
After Hours: 882541
Fax: 254 2 211828



ANDY LANE



ANDY LANE



ANDY LANE



ANDY LANE

From top downwards: Arrival at Wadelai on the Nile; Wreck of Lugard II at Pakwach; Fishermen's village near Pakwach; Goliath heron at take-off, Rhino Camp.

impressive mountains on the Zaire side, we reached Pakwach bridge - a site of such strategic importance that an army battalion is stationed there to protect it. To avoid any rash misinterpretations of our behaviour, we were careful to stop *before* the bridge and carried on up to the

sentry post by foot. We congratulated ourselves on our wise decision after seeing what heavy artillery lay on the other side of the bridge.

Had we not possessed official papers our journey would have ended there, and not pleasantly either, judging by the temperament of the sentries. I was forced to remove my sandals as they were not considered appropriate for the army. Andy was given star treatment on the other hand, as he was wearing a nice pair of leather boots. Thankfully, just as I was starting to jump up and down on the baking earth the Political Commissar arrived and took control. It turned out that he had been expecting us the day before and was cross that we were late. In a darkly sarcastic manner he informed us time and again that he would personally assure our safety in the battalion compound. What dangers he had in mind we never found out. But it was an unpleasant night thinking about them, especially as he woke us up three times to reassure us.

With the light of dawn we found ourselves camped in the shadow of the *Lugard II* paddle steamer. Climbing up on to its rusting hull we found the levers and bells intact in what remained of the control room. Even the wooden blades of the paddles had not rotted completely and gallons of original engine oil lay floating under the deck. Back at the boat the pilot and navigator were brushing off lake flies from their clothes and hair; the full moon of the night before had encouraged the little sandy coloured flies to swarm in their monthly jamboree.

We quickly left Pakwach hoping to make it to Rhino Camp in one day. The river soon developed into an enormous shallow water lake - Lake Rubi - from which numerous marshy channels issued as we had feared. Since none of us had any idea which channel to choose we pursued fishermen in their dug-out canoes in order to find out. Between us we

spoke English, French, Luo, Mahdi, Swahili, Lunyoro, Luganda, Lugungu, and a smattering of Lingala, which sufficed for the majority of the fishermen but not all. Most often we only had to get the accent right on 'Rhino Camp' and we would get an arm-wave in the correct direction. There was one place which I particularly wanted to see en-route: Emin Pasha's deserted fortress at Wadelai. But of course we went straight past it without knowing.

By the time the river narrowed near Rhino Camp, floating weed covered about one third of its surface. The weed's beautiful purple flowers betrayed it as water hyacinth - as yet an uncontrolled menace to East African waterways leading to eventual clogging of the water. The 'harbour master' at Rhino Camp greeted us warmly as we came ashore - his tiny horseshoe harbour now home only to dug-out canoes not paddle-steamers. He advised us to introduce ourselves to the police 'incharge' whom we tracked down sleeping soundly under an umbrella tree.

AFTER THE LABORIOUS TASK of entering all our details into his log book we were taken on a guided tour of the town, which comprised one semi-derelict cotton ginny, a single line of brick houses, a vegetable market in the shade of an umbrella tree, and yards and yards of submerged landing stage where the boats used to pull in. This was all very interesting but we found nobody who could remember the old boats; they were all too young. As for the white rhinos which so fascinated Churchill, they disappeared from Rhino Camp in 1980 after Tanzanian forces swept through pursuing Idi Amin.

Before continuing our journey northwards the following morning, we went back upstream with a young fisherman who had promised to show us Wadelai. After about one hour he began studying the west bank of the river intently, giving out complex orders to the pilot. We suddenly found ourselves travelling at full speed towards the bank, as we had often done before in error, but this time punctured the reeds and broke through into a concealed harbour - Wadelai harbour - where we were met with a mixture of laughter and disbelief.

It appeared that the fort was one mile away, over the crest of a hill, so we left the boat with the pilot and set off by foot, preceded by a long line of village men. The path leading up from the riverbank soon gave way to a track through high elephant grass, and five miles later we emerged at the riverbank once more, exhausted and uninterested in Wadelai forts. But there was something to see after all - a stone monument inscribed with the words:

WADELAI
EGYPTIAN STATION
1879 - 1889
CAPITAL OF EQUATORIA
UNDER EMIN PASHA

We knew something had gone wrong with the outboard when later that afternoon, having left Rhino Camp at least thirty miles behind us, it stalled, forcing us to paddle to the nearest fishermen's settlement. It was already getting dark so we made sure that the village headman was happy with us camping and put the tents up. The

pilot cleaned up the plugs and points of the engine, topped it up with fuel and gave it a polish. He said it would be fine in the morning.

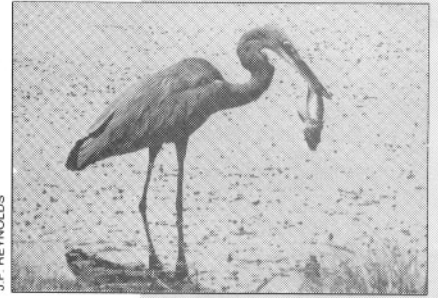
When dawn came we pushed off into the river, leapt aboard and the pilot began the ritual of exhausting himself pulling the outboard cord. Nothing. He pulled again in vain, and then we all pulled in vain, and then we realised our predicament. The padre who had been silent up until this point began praying out loud for the outboard to start, but this didn't help. We sat around for a while wondering what to do.

The pilot began murmuring that we should never have left without a mechanic. He had 'given up' on the engine after cleaning its plugs so I went aft to have a look at it. The cogs linking the throttle to the carburettor were so badly worn that the throttle was virtually disengaged. I disconnected it properly and applied a bolt to the internal throttle, then fixed a screwdriver to this to act as the new control. Fearing that I had made matters worse the pilot refused to cooperate until I explained that I would take over his job unless he did. He played for time. To reinforce my point I pulled mightily at the cord and the engine sprung into life surprising everyone. The pilot was overcome with joy and kept shouting: 'Mechanic! Mechanic!'

We ambled our way northwards along the *Bahr el Jebel* (River of Hills). It was far easier to navigate than we had imagined as the main channel was often extremely wide. For the most part our companions were goliath and purple herons, crested cranes, fish eagles and ospreys, and the African jacana. We scanned the marshes for rare shoebill (whale headed) storks, but failed to find any. We searched for the steamer *Nyanza*, supposedly sunk in shallow water downstream from Hippo Camp, but again failed. The steamer, which was brought to Sudan by Baker and later used by Colonel Gordon to determine once and for all the source of the Nile, is thought to have been scuppered by Emin Pasha as he fled the dervishes, and may be full of ivory.

At our destination, Laropi, we came ashore and drank sweet milk tea at a tiny hotel serving the ferry crossing - the only regular transport service we had seen on the journey. I found myself sitting next to a member of the county council who was collecting supplies for his hotel on the opposite bank. Simon Goli was old enough to remember the *Lugard 11* and the barges, and as we talked he became lost in the past. He told us how cotton, sesame, cassava, millet, maize, and sorghum all used to be sent southwards to market, with fuel, cement, and hardware being brought back in return. The region had a lifeline and prospered accordingly.

The good news for Simon and others living by the Albert Nile is that a new lifeline is under review. The Lutheran World Federation which has already done so much quality development work in Uganda, is preparing plans to introduce a small-scale barge service on the river, transporting cargo and limited numbers of passengers. The level of comfort may never achieve that of yesteryear, but if successful the region may recapture some of its lost prosperity.



J.F. REYNOLDS



FRANTS HARTMANN

Purple heron and Crowned cranes were companions along the Bahr el Jebel. Other birds commonly sighted were the crowned cranes, ospreys and the African jacana.

See Kenya

1. LUXURY SAFARIS
2. ALL INCLUSIVE GROUP TOURS
3. PRIVATE SAFARIS
4. INCENTIVE GROUPS
5. BEACH HOLIDAYS
6. CAR HIRE
7. HOTEL AND LODGE BOOKINGS
8. TANZANIA SAFARIS

MEMBER



WE ACCEPT
AMERICAN EXPRESS
DINERS &
MASTERCARD
CREDIT CARDS

with
**BIG
FIVE**



tours and safaris ltd.

Big Five - the people who care..

NAIROBI
PHOENIX HOUSE,
KENYATTA AVENUE
• P.O. BOX 10367
TEL: 229803 • 228352 • 225167 •
213252 • 213103 • 213102
TELEX: 23055 "BIG FIVE"
FAX: 254 2 337965, NAIROBI

MOMBASA
AMBAL HOUSE,
NKURUMAH ROAD
• P.O. BOX 86922
TEL: 311426 • 311524 • 220421
FAX: 254-11-311498



HOT ICE LTD.

EXPEDITION AND SAFARI OPERATOR

U G A N D A

- Gorilla safaris
- Traditional tented safaris.
- Explorer safaris.
- Rwenzori mountain trekking.
- Rabongo cottages.
- Lake safaris.
- Air safaris.
- Lodge and hotel bookings.

P.O. Box 151 Kampala, Uganda, Tel: 236777/267441 Fax: 242733, Telex: 61240/61205



Delamere Camps Ltd.

Soysambu Wildlife Sanctuary - Elmenteita.

From Aardvarks to Zorilas your time at Soysambu will be a safari within a safari, an unforgettable wildlife experience, stalking wild game animals on foot, escorted nature walks, silent and still vigils in strategically placed game and bird blinds, and night time game drives. You are welcome, to walk....to whisper....to wait.... to watch....and to wonder!!

As one of Kenya's newest, smallest and most intimate permanent tented lodges, a visit to Delamere's Camp and The Soysambu Wildlife Sanctuary is an essential element to any wildlife Safari in East Africa. A unique opportunity to explore the land that inspired the third Baron, Lord Delamere to make this fabulous area his home..

Contact Steve Turner:

Box: 48019 Nairobi Kenya, Telephone: 331684, 335935, 331191. Fax: 216528, Telex: 25580.

2nd floor Fedha Towers Stand:rd / Muindi Mbingu St.



*Education for the girl who seeks adventure
and enjoys the outdoors.*

Recent whole school expeditions to
Lake Turkana and Mount Kilimanjaro.

Contact the Headmaster, Tigoni Girls' Academy,
Box 10 Limuru. Tel: 0154 40961.



Tigoni Girls' Academy

"There is no other girls' school like it!"

ADVENTURE IN EAST AFRICA

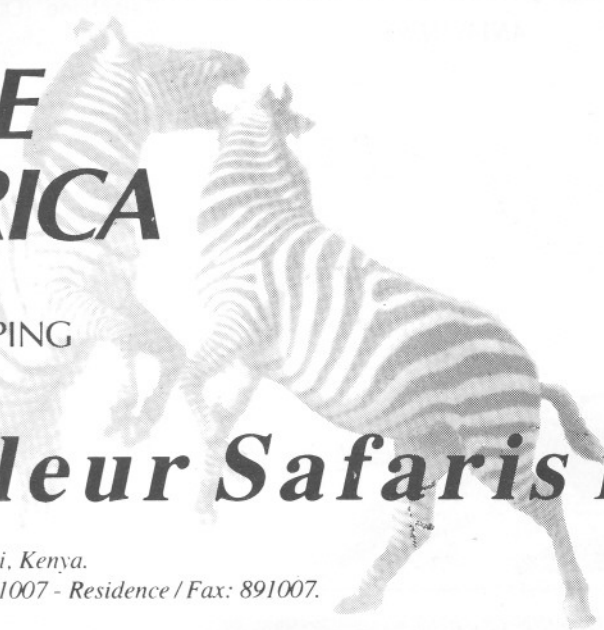
TAILOR MADE
LUXURY CAMPING
SAFARIS.



BATELEUR
EAGLE

Bateleur Safaris Ltd.

P.O. Box 42562 Nairobi, Kenya.
Telephone: 890454 / 891007 - Residence / Fax: 891007.



Mara River Camp

The resident Hippopotami have long ruled out the possibility of a swimming pool while the roaming herd of bull Elephant have long ago put an end to any exotic gardens. However indigenous shrubs are plentiful, the meals produced from our charcoal hearth kitchens delicious and wholesome, the staff and management very friendly, all perfectly complemented by the most comfortable of safari facilities.

Masai Mara River Camp Ltd

Bedha Towers 2nd Floor,
Telephone: 331191

Muindi Mbingu St / Standard St. PO Box 48019 Nairobi Kenya.
229009 Telex: 25580 EAORN, Fax: 254-2-216528. Nairobi Kenya.



WE OFFER THE BEST
ANYWHERE

WORLDIN TOURS & TRAVEL LTD.

- Package Tours • Travel • Car Hire • Hotel Booking
- Air Safaris • Luxury Safaris • Beach Holiday
- Camping Safaris • Climbing Safaris

12th Floor, IPS Building, Kimathi Street.
P.O. Box 10414, NAIROBI, KENYA
Telephone: (Office) 218824, 336158
Telex: 23126 - INTOUR, Fax: 218825

**BEST DEALS
GUARANTEED**



KENIA TOURS AND SAFARIS LTD

CAMPING & LUXURY SAFARIS

Jubilee Insurance Building
4th floor Suite no 408
Corner Kaunda/Wabera Street
P.O. Box 19730 NAIROBI-KENYA
Tel: 223699/217671/230635
Telex: 22143, Fax (254-2) 217671
(After 6.00 p.m.) 444572



“ The People with
knowledge of Africa”

- Mountain Trekking
- Hotel and Lodge Bookings
- Luxury and Lodge Safaris
- Individual and Group Travel
- Camping Safaris
- Special Air Safaris
- Beach Holidays
- Special Students Rates.

THE KENYA TOURING COMPANY THAT DOES NOT WANT TOURISTS

We do not want tourists

“Gee Henry – there’s a G–raf – Tick it off” types are not for us –

We supply authentic safari holidays for safari connoisseurs in our exclusive camps set amongst large game concentrations, where our experienced couriers will find you unique game photographic opportunities from the comfort of our 4WD Toyota Landcruiser Safari Vehicles.

We also operate – in fact we invented, Economy “TURKANA BUS” type safaris for those looking for the maximum involvement at a minimum cost.

Incidentally, Adam Hedges with his Capricorn Safaris in Botswana, and Emma with her Desert Rose Camel safaris, into another age, also attract the nicest people – TRAVELLERS – NOT TOURISTS.

Prices range from \$50 to \$ 250 per day.

NEVERTHELESS, If you insist: – we can hire you a self drive, or even book you a string of excellent lodges and permanent camps connected by mini bus – Just like everybody else . . .

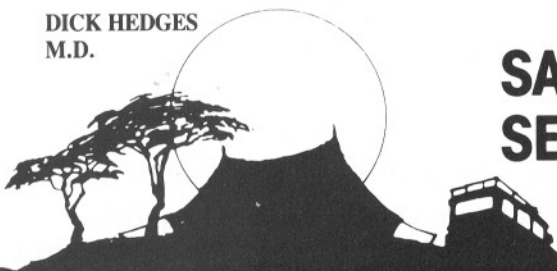
or check out KUONI WORLD WIDE BROCHURE with your local travel agent . . . Remember, Kuoni have been voted U. K.’s best Tour Operators – 10 years running and 20,000 ex. Turkana Busites can’t be wrong!

DICK HEDGES
M.D.



SAFARI CAMP SERVICES LTD

CONTACT.
SAFARI CAMP SERVICES LTD.
P.O. BOX 44801, NAIROBI, KENYA.
Tel: 228936, 330130
Fax: 254.2.212160 Telex: 25108 SCS
One of Kenya’s oldest established
camping operators.



KENYA

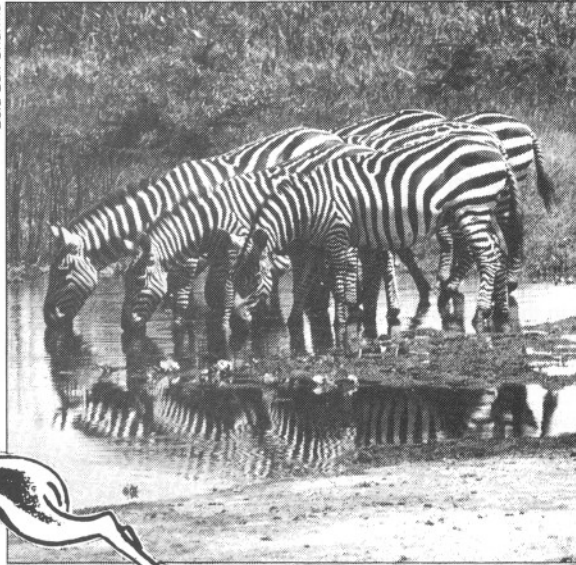
Your dream of a
Safari!
A reality with us

**Smart
TOURS & TRAVEL LTD**

Suite 312 Jubilee Insurance Exchange
Mama Ngina Street – next to 20th Century Plaza P.O. Box 42830



Bela Ball-Sharma



- Come and see the great migration of Wildebeest and Zebra crossing into the Mara
- Stay at tranquil bush-camps – superbly run
- Watch spectacular sunsets against the backdrop silhouette of majestic Mount Kilimanjaro from Yatta Plateau in Tsavo
- Join the northbound nomads on a personally escorted Camel Safari through unspoiled Africa
- ... or our Oxwagon Safari, where you can take a long, slow look at nature.

Such days should never end!

Nairobi, Kenya. Tel: +254 (2) 225850/332671 Fax: + 254 (2) 216293



East African Ornithological Safaris Ltd.

"This is your invitation to experience the best of Africa, with one of Kenya's oldest and most specialised tour operators, to discover the land that has inspired explorers and ourselves from time immemorial."



Delamere Camps Ltd.

Soysambu Wildlife Sanctuary - Elmenteita.

From Aardvarks to Zorilas your time at Soysambu will be a safari within a safari, an unforgettable wildlife experience, stalking wild game animals on foot, escorted nature walks, silent and still vigils in strategically placed game and bird blinds, and night time game drives. You are welcome, to walk....to whisper....to wait....to watch....and to wonder!!



Masai Mara River Camp Ltd.

"Probably Kenya's most charming permanent tented lodge in undoubtedly the finest wildlife sanctuary, a camp that blends perfectly with the environment, the indigenous riverine forest, the croton thickets, the wildlife and the clientele that she attracts". Be one of those clients!!!

Contact Steve Turner:

Box: 48019 Nairobi Kenya, Telephone: 331684, 335935, 331191. Fax: 216528, Telex: 25580.
2nd floor Fedha Towers Standard / Muindi Mbingu St.



Safaris Unlimited (Africa) Limited

P.O. Box 24181, Nairobi, Kenya
Telephone 891168, Fax (254 2) 891113 / 882723 Telex 22380



Photographic Safaris under Canvas
Traditional luxury safaris and guided tours of Kenya's wilderness and game reserves in 4 WD landcruisers.

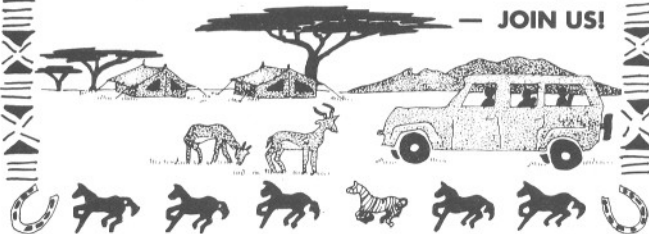


Safaris in the Saddle
A once-in-a-lifetime adventure for the experienced horseman. Ride out from a base camp traversing miles of Masailand over dramatic landscapes amongst herds of game.



Sporting and Fishing Safaris
Specialised safaris for those interested in the outdoor life. Fly-fishing, deep-sea fishing, climbing, safaris by camel or canoe and bird hunting arranged.

This year we celebrate our 21st Anniversary — JOIN US!



Don't argue...



...we're undoubtedly the best!

Bushbuck Adventures are specialists in real adventure safaris. Expert guides to give you their personal attention; 4-wheel drive vehicles to get you to areas of great natural beauty and interest at a leisurely pace; private and secluded camps; professional safari cooks, they all combine to make **your** safari the safari of a lifetime. Send now for details.

Our personal attention is guaranteed

Bushbuck Adventures

Leaders in Ecotourism

Bushbuck Adventures Ltd. P.O. Box 67449, Nairobi, Kenya
Telephone: (254-2) 212975/6, 218478(O) 521554(H)
Fax: (254-2) 218735/212977 Telex: 22992Hosecs



Rowland Ward's



BIG GAME HAND ENGRAVED CRYSTAL

INCLUDING
BIG GAME FISH SERIES

Please write to us for our illustrated catalogue (VI) which consists of our range of crystalware along with our prices.

ROWLAND WARDS

P.O. Box 40991, NAIROBI, KENYA TEL: 225509, FAX: 721317.



the spinner's web ltd
KIJABE ST. P.O. BOX 52164, NAIROBI, KENYA. TEL. 228647.

AFRICANA BOOKS
E.T. FUNNELL,
 81 Manor Park Avenue, Princes Risborough, Buckinghamshire, England, HP 27 9AR. Telephone: 084 44 3165

Scarce and Out-Of-Print Books about East and Central Africa. Free Lists Issued Quarterly, Specific Titles Searched For.

RAFIKI BOOKS

Your Source For
BOOKS ON AFRICA
 & Safaris to Meet Authors

**45 RAWSON AVENUE SW
 CAMDEN ▲ MAINE 04843 ▲ USA
 ▲ 207-236-4244 ▲**



REMOTE RIVER EXPEDITIONS

**whitewater, wildlife
 and wilderness in
 TANZANIA, ETHIOPIA
 & MADAGASCAR**

Contact Conrad Hirsh,
 PO Box 15135, Nairobi, Kenya
 Tel: (254 2) 891331
 Fax: (254 2) 891307



East Africa
 for the discerning
 traveller....

Custom designed safari tours for those seeking something different without foregoing the quality of experience. Kenya, Uganda and Tanzania & other areas. Superb wildlife in National Parks and Reserves, on private ranches and in offbeat areas: friendly peoples and fine scenery. Excellent food and accommodations in safari lodges and camps. Photographic safaris by road and air: ornithology, ballooning, mountain trekking, camel walking, scuba diving, sea/lake fishing and golf. The Masai Mara, Samburu and Amboseli, Mts. Kenya and Kilimanjaro, Ngorongoro Crater, the Serengeti, the vast Selous, Zanzibar, the Ruwenzori range, Murchison Falls and Q.E. Park. Research, planning, operation, transport and costing for every size and type of party based on over 40 years African experience. Much personal attention. Individual itineraries and our 'Kenya and Tanzania Regular Departure Safaris' leaflet sent on request.

Contact:

Bruce Safaris Ltd.

Bill Dixon, (Swara), P.O. Box 40662, Nairobi, KENYA.
 Fax: (254 2) 223647. Tel: (254 2) 227311/339094.

Member: KATO. and American Society of Travel Agents.

for the finest collection of

AFRICAN ART & CRAFTS

Visit

Craftsales Gallery



University Way
 P.O. Box 74662
 Tel. 225695
**NAIROBI
 KENYA**

Shanzu Beach
 P.O. Box 87458
 Tel. 485094
**MOMBASA
 KENYA**

Wholesalers & Exporters of African
 Crafts & Jewellery

FROM



TO



**BOOKINGS LIMITED
 MAKE SAFARIS
 IN KENYA EASY.**

Because Bookings Limited offer the most comprehensive travel service in Kenya you can sit back and relax. We'll do the rest.

Everything from air travel to zebras. We can organise it.

Tours and safaris, car hire, hotel and lodge reservations, aircraft charter, deep sea fishing, camel safaris. A whole alphabet of services. And it's all under one roof. Which means you can get a faster, more reliable and efficient service.

For more information on the best ways to travel and where to stay in Kenya contact Bookings Limited.

BL Your A-Z travel service.

BOOKINGS LIMITED
 New Stanley Hotel, Standard Street,
 P.O. Box 56707, Telephone 225255, Nairobi. Telex 25345 Fax 216553.

Myth of the modern hunter

by Leslie S. Adler

Carvings from Africa, Fort Bragg, California, USA

I READ WITH CONSIDERABLE CONCERN, Imre Loeffler's article, 'To Hunt or Not Hunt', in *Swara*, Jan/Feb 1993 issue. Is it possible, since *Swara* seems to be a rather democratic magazine, to voice another opinion, not so much as to argue with Dr Loeffler's thoughts, but to present other ideas that invade one's mind when the question of willing euthanasia appears for the purpose of monetary gain?

Is it an accepted fact that human beings have the right to play God with the lives of animals and to decide their fate, not primarily for the benefit of the animal, but for the convenience of man? Why is it always and in all circumstances the animal that is the hunted one? We live in a rapidly diminishing world and, it is quite apparent, man will never live in peace with his own kind. We have exploited animals almost to extinction. Even their rate of propagation cannot equal man's murderous intent.

Hunt on foot? What nonsense! In the United States, no decent 'sportsman hunter' would be seen without beer, whiskey, enough food to feed an entire African village, packed in a pickup truck, the cost of which an average working African would not see in almost a lifetime.

I see little about government corruption that any animal would be interested in. Perhaps we should end government corruption and leave the animal alone to fend for himself. Why is it that if we cannot control it, we must kill it? This is the motive of the hunter. With few exceptions, no other consideration, more or less, is involved. Over time some normal hunters realize they are murdering a life. Others never come to this realisation and decorate their walls with heads of once living and functioning substances. If we could balance this unequal scene with the heads of trophy hunt-

ers, then we might have some understanding of what we are doing!

Why does the animal always have to pay a price for our stupidity? We use them because they are passive. The predators are not passive and therefore present a threat to our very existence once we invade their territory.

If practicality must be discussed, let us linger for a second on the death of almost one half million Americans every year due to cardiac problems. One of the main causes is improper diet; an over-indulgence of animal products. Let us speak of the trophy hunter who only kills the finest, healthiest animal of a kind, so the eventuality is to leave nothing but the smallest and weakest to survive. Let us kill gorillas for their hands to be used as ash trays. Let us kill elephants for a carving that could grace a shelf in our house. Let us kill every animal for one reason or another, and when all the animals are killed, we will have enough room for all the high rise apartments we need. Only one problem. What will the hunters do for thrills when all the animals are gone? Who do governments blame when there is no tourist dollar because there are no animals to see or photograph, only high rise apartments? Do you think this is an extreme theory? Visit the coast of Spain.

Imre Loeffler must be very young, because all the people I speak to would rather live to a ripe old age and not want their life to end at the advent of the first pain, or the

initial signs of old age. This thought is very proper, as long as it happens to someone else. Not ourselves. Old age is going to happen to all of us, if we live long enough. As soon as someone talks to an old male predator (no female predators exist?), and he says he would rather die quickly, then lead his life to the fullest, and conveys this message to me, then I will understand this is the desire of the animal that we are so quickly willing to kill with a 'painless' bullet.

Animal functions are quite simplistic. They eat, mate, somehow survive as best they can and then die. Science has explored every essence of their physical being, their habits etc., and

have reached some dynamic conclusions. Some are assumptions that have no validity. Yet we consistently experiment with their bodies and minds repeatedly. All mankind benefits in some fashion from animal experimentation. The abuse, however, is fantastic. We give no quarter.

I do not really believe there is a genuine answer regarding the hunt or not hunt question. Unfortunately, as long as a percentage of the populace has no value for life, aside from their own, this conflict will exist to the very end of man's invasion of this planet. I am truly saddened by the fading of wildlife on Earth. If we cannot live with each other in peace, how can we respect any other form of existing life?

Readers are invited to contribute to this column.

What will the hunters do for thrills when all the animals are gone?

TINGA TINGA®

TAKING CASUAL WEAR SERIOUSLY

TINGA TINGA CLOTHING LTD

FUNZI ROAD INDUSTRIAL AREA, P.O. BOX 43088 NAIROBI, KENYA TELEPHONE 545114/5, 541282
FAX: 541283



REMOVALS FREIGHT TOURS & TRAVEL LTD.

Travel made easy by the people who care!

HEAD OFFICE

Continental House,
Harambee Avenue, 3rd Floor,
Opposite Parliament Building,
P.O. Box 22699, Nairobi, Kenya.
Tel: 330525, 331994, 222289, 229300
Telex: 23247 RMOVAL KE
Fax: 254-2-334488

BRANCH

Mombasa
Bima Towers,
Digo Road,
P.O. Box 87920, Mombasa,
Tel: 314249 / 227469.



TURKANA TRUCK SAFARIS

FOOT SAFARIS · CAMEL TREKKING · MOUNTAIN BIKE SAFARIS

ADVENTURES IN AFRICA

Gametrackers safaris are designed for those in search of real adventure, who enjoy the unpredictable and who want to get away from the well travelled tourist tracks.

The open African plains where you can see forever, star filled night vistas, animals in the wild and an expert safari cook – experience the real Africa.



Gametrackers

Leaders in Camping and Lodge Safaris in Kenya
PO Box 62042 Nairobi Kenya
1st Floor, Kenya Cinema Plaza, Moi Avenue
Tel: 338927, 222703, 212830/1/2, Telex: 22258 Tracker, Fax: 330903

CANOE SAFARIS · MOUNTAINEERING SAFARIS · GORILLA SAFARIS

TANZANIA & UGANDA SAFARIS



A TOUCH OF COUNTRY WITHIN THE CITY

*S*ET IN 5 ACRES OF BEAUTIFUL GARDENS
OUR ACCOMMODATION IS IN THE BEST
TRADITION OF A COUNTRY HOTEL
YET EQUIPPED WITH ALL MODERN FACILITIES
AT AN AFFORDABLE PRICE.

FAIRVIEW
THE
COUNTRY
HOTEL
IN TOWN **HOTEL**

BISHOPS RD., P.O. BOX 40842, NAIROBI, KENYA • TEL: (254-2) 723211
CABLES "FAIRVIEW", TLX: 25584 FAIRVIEW • FAX: (254-2) 721320